



Dayton Grove, London, SE15 2NX

Price:
£ 775,000

Dayton Grove, London, SE15 2NX

Price: £ 775,000 3 bedroom house

[View Property](#)

OVERVIEW

A beautifully presented mid-terrace period home located on the highly sought-after and leafy Dayton Grove in Peckham. Available to market for the first time in 37 years! This handsome residence offers generous proportions across all floors, brimming with original character and charm throughout with investment and personal touch potential.

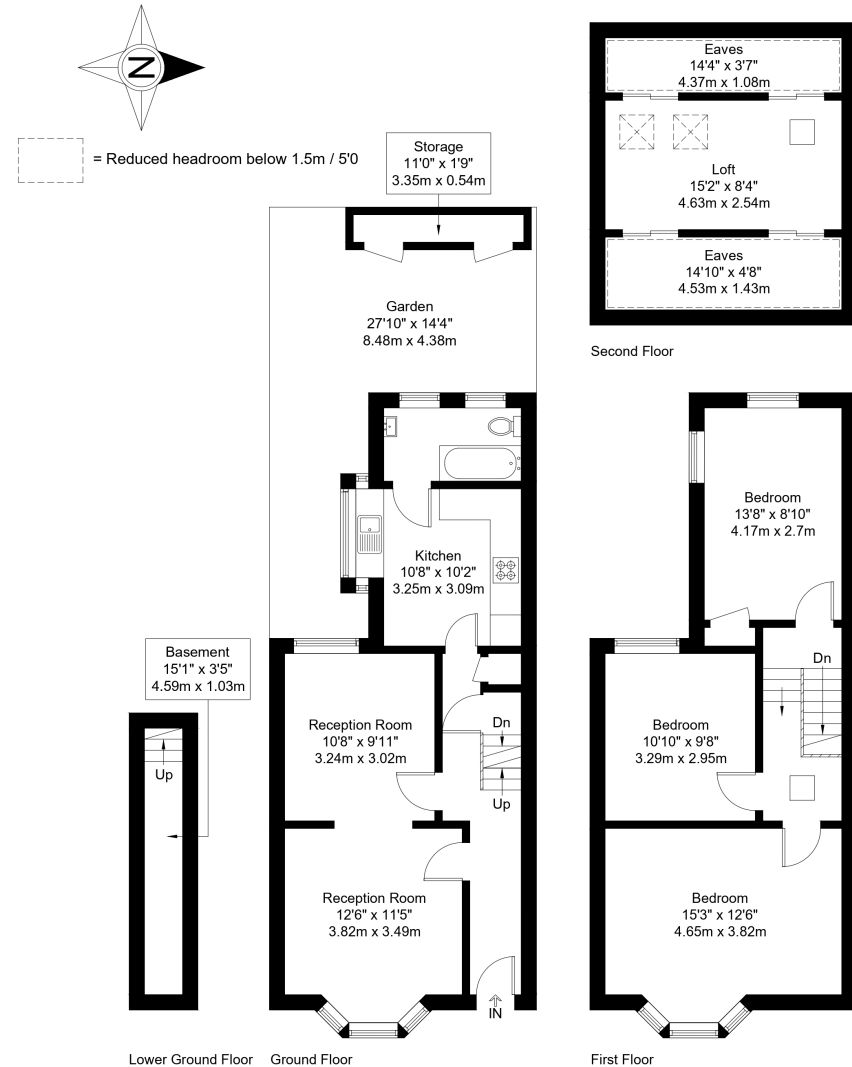
Upon entry, you are welcomed via the hallway into an elegantly arranged double reception room, featuring bay windows and classic detailing. To the rear, a well-appointed kitchen and contemporary bathroom lead directly out to a private rear garden, ideal for entertaining or family living.

KEY FEATURES

- Mid-terrace period home on one of Peckham's most desirable streets
- Double reception with bay windows and original period features
- Fitted kitchen and modern bathroom with garden access
- Three double bedrooms arranged across the first floor
- 19'9 cellar offering storage or future potential
- Private rear garden ideal for entertaining or families
- Just 200m from Queens Road Peckham station
- Close to cafes, shops and future Peckham main Line

Dayton Grove, SE15

Approx Gross Internal Area = 106.9 sq m / 1151 sq ft
Restricted head height / Eaves = 11.7 sq m / 126 sq ft
Storage = 1.8 sq m / 19 sq ft
Total = 123.9 sq m / 1334 sq ft



The Floor plan is not to scale and measurements and areas shown are approximate and therefore should be used for illustrative purposes only. The plan has been prepared in accordance with the RICS code of Measuring Practice and whilst we have confidence in the information produced it must not be relied on. Maximum lengths and widths are represented on the floor plan. If there is any aspect of particular importance, you should carry out or commission your own inspection of the property.
Copyright © BleuPlan

