

EBI

EBI

**Dara House, 50 Capitol Way, NW9 0BR**

Price:  
£ 400,000





# Dara House, 50 Capitol Way, NW9 0BR

Price: £ 400,000 2 bedroom house

[View Property](#)

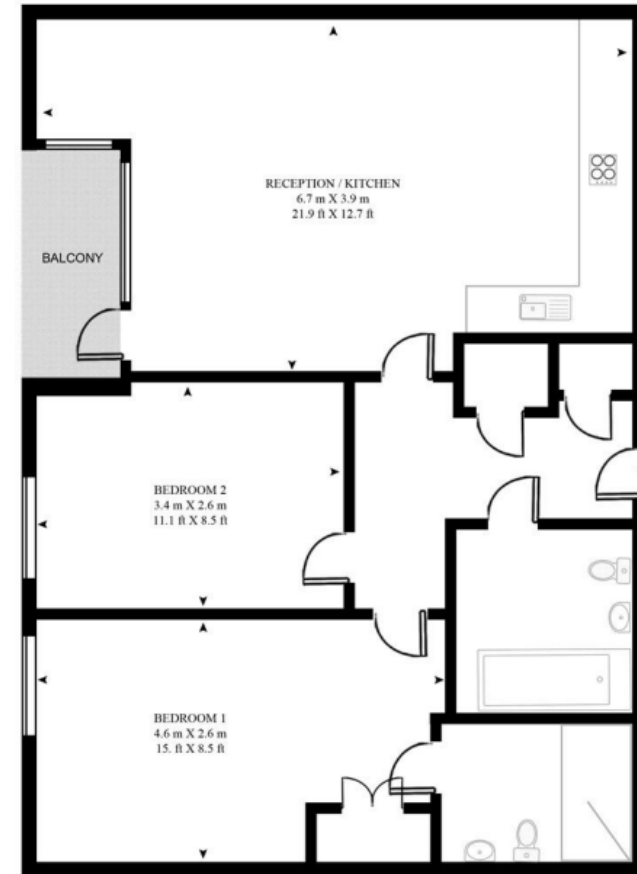
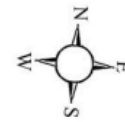
## OVERVIEW

Set within the modern and highly regarded Beaufort Park neighbourhood, this beautifully presented two-bedroom, two-bathroom apartment in Dara House, 50 Capitol Way, Colindale, NW9, offers contemporary living with excellent resident facilities and outstanding transport connectivity. Offered chain free and extending to approximately 645 sq ft, the property benefits from a private balcony, stylish interiors, and access to premium amenities, making it an ideal home for owner-occupiers, first-time buyers, and investors alike.

The apartment features a bright and well-proportioned open-plan living and dining area, designed to maximise natural light and functionality. Large windows and direct access to the private balcony create an inviting living space, perfect for both relaxing and entertaining. The contemporary kitchen is finished with sleek cabinetry, integrated appliances, and quality worktops, providing a practical yet elegant setting for modern living.

## KEY FEATURES

- Chain-free two-bedroom apartment
- Two modern bathrooms
- Approx. 645 sq ft internal space
- Private balcony outdoor space
- Hotel-style concierge service
- 24-hour security provision
- Fully equipped residents' gym
- Modern Beaufort Park location
- Close to Colindale Underground Station
- Strong lifestyle and investment appeal



FOURTH FLOOR

APPROXIMATE GROSS INTERNAL FLOOR AREA 645 SQ.FT (60 SQ.M)

## Energy Performance Certificates

Energy Efficiency Rating		
	Current	Potential
Very energy efficient - lower running costs		
(92+) <b>A</b>		

