

EBI

EBI

Dara House, 50 Capitol Way, NW9 0BR

Price:

£ 2,100 /pcm

Dara House, 50 Capitol Way, NW9 0BR

Price: £ 2,100 /pcm2 bedroom house

[View Property](#)

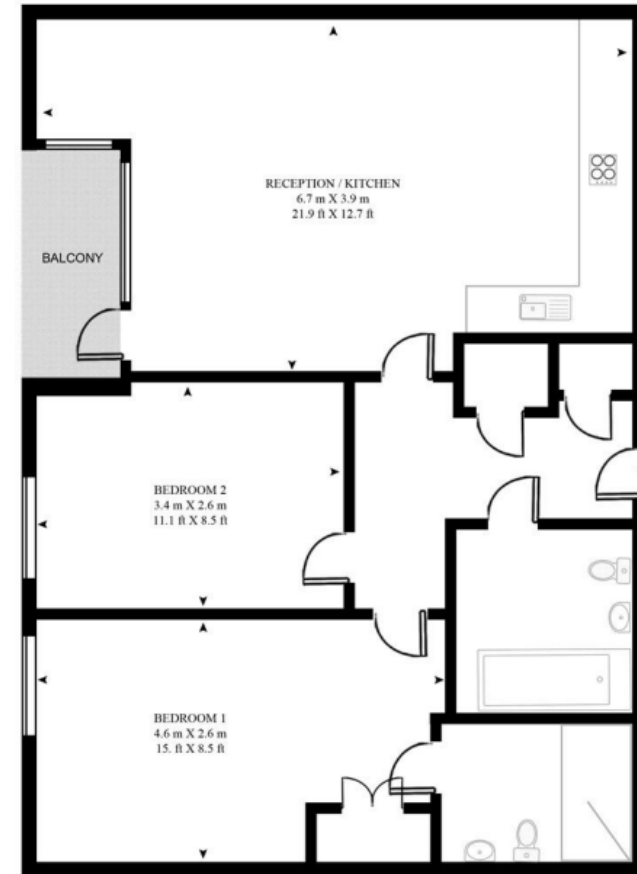
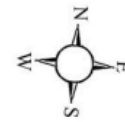
OVERVIEW

Located within the modern and increasingly sought-after TNQ development in Colindale, this well-presented two bedroom apartment at Dara House offers contemporary North West London living with excellent resident facilities and superb connectivity into Central London.

Positioned on Capitol Way, the development has become particularly popular with professionals and young families seeking modern accommodation, strong transport links and growing lifestyle appeal within Zone 4.

KEY FEATURES

- Two bedroom
- Ensuite bathroom
- Modern apartment
- Private balcony
- High specifications fittings
- Spacious living
- 24 hour security
- Concierge
- Gymnasium
- 30 minutes away from The City and Central London via the Northern Line
- Five minutes walk to Collingdale underground station



FOURTH FLOOR

APPROXIMATE GROSS INTERNAL FLOOR AREA 645 SQ.FT (60 SQ.M)

Energy Performance Certificates

| Energy Efficiency Rating | | |
|---|---------|-----------|
| | Current | Potential |
| Very energy efficient - lower running costs | | |
| (92+) A | | |

