



Corson House, 157 City Island Way, E14 0TP

Price:
£ 1,995 /pcm

Corson House, 157 City Island Way, E14 0TP

Price: £ 1,995 /pcm

[View Property](#)

OVERVIEW

Set on the 18th floor of the iconic Corson House, this stunning apartment offers breathtaking views across East London and the River Thames. Flooded with natural light through floor-to-ceiling windows, the apartment features a stylish open-plan kitchen and living area, leading to a private balcony – perfect for enjoying the skyline.

The sleek kitchen is fully integrated with high-spec appliances, while the spacious double bedroom includes built-in wardrobes. A modern bathroom, engineered wood flooring, and contemporary finishes throughout complete the interior.

KEY FEATURES

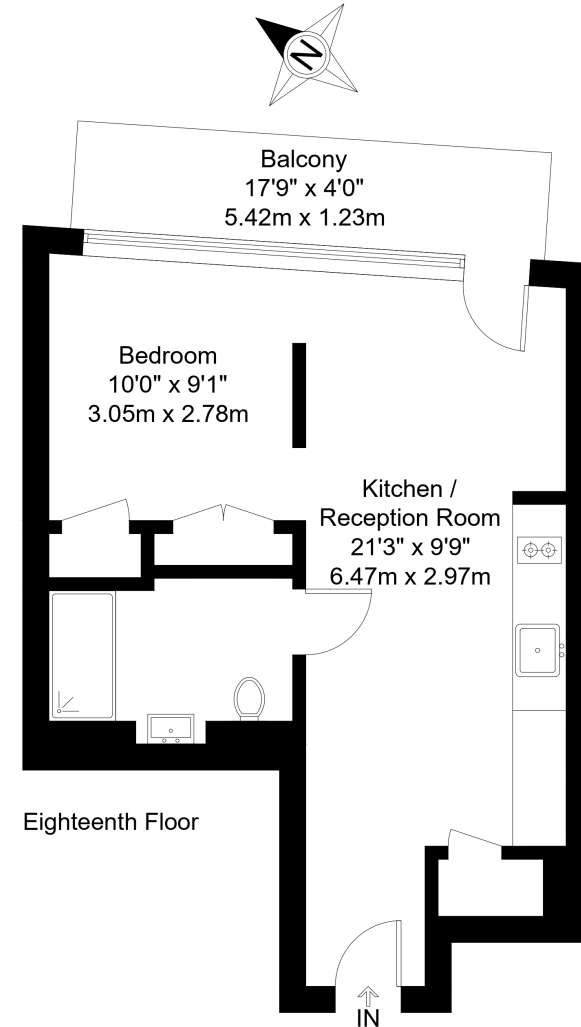
- Located on the 18th floor with panoramic views across East London and the River Thames
- Spacious apartment with floor-to-ceiling windows and private balcony
- Open-plan living and kitchen area with integrated high-spec appliances
- Generous double bedroom with built-in wardrobes and natural light
- Contemporary bathroom with sleek fittings and modern design
- Access to residents' gym, heated outdoor pool, spa, lounge, and 24-hour concierge
- Part of the award-winning London City Island development
- home to English National Ballet
- Excellent transport links via Canning Town Station (Jubilee Line & DLR
- Zone 2)

City Island Way, E14

Approx Gross Internal Area = 38.8 sq m / 418 sq ft

Balcony = 6.7 sq m / 72 sq ft

Total = 45.5 sq m / 490 sq ft



The Floor plan is not to scale and measurements and areas shown are approximate and therefore should be used for illustrative purposes only. The plan has been prepared in accordance with the RICS code of Measuring Practice and whilst we have confidence in the information produced it must not be relied on. Maximum lengths and widths are represented on the floor plan. If there is any aspect of particular importance, you should carry out or commission your own inspection of the property.

Copyright © BleuPlan

