



Colmore Snow Hill Wharf, Shadwell Street, B4 6LL

Price:
£ 260,000

Colmore Snow Hill Wharf, Shadwell Street, B4 6LL

Price: £ 260,000 2 bedroom house

[View Property](#)

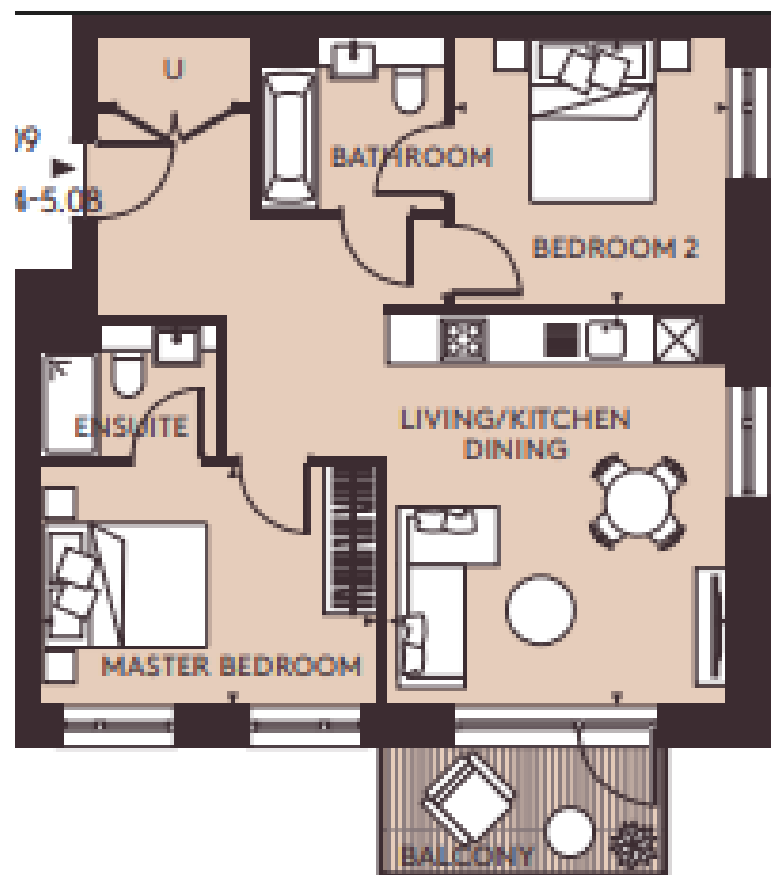
OVERVIEW

A luxury 2-bed apartment boasting (699 Sq. Ft) plus private balcony located on the 4th floor in The Colmore, Snow Hill Wharf, Birmingham.

The Colmore is the final, and most exclusive phase of Snow Hill Wharf. It represents contemporary urban design at its most stylish and original. Luxury apartments and premium penthouses, many with outstanding views across the city or the canal, offer a rare and sought-after lifestyle a stone's throw away from the city centre.

KEY FEATURES

- Canal side apartments and penthouses
- 2 bedrooms
- 4th floor
- Panoramic views
- Luxury interiors
- Podium gardens
- 24-hour concierge service
- Gym
- Sauna and steam room
- Exclusive cinema room
- Completions from Q4/Q1 2023



Total Area	65.0 sq m	699.5 sq ft
Living/Kitchen/Dining	4.14m x 4.74m	13'7" x 15'7"
Master Bedroom	4.10m x 2.92m	13'6" x 9'7"
Bedroom 2	3.35m x 3.26m	11'0" x 10'9"
Balcony	5.0 sq m	53.8 sq ft

