



**Colmore House , Frazer Nash Close, TW7 5XB**

Price:  
£ 339,000

# Colmore House , Frazer Nash Close, TW7 5XB

Price: £ 339,000 1 bedroom house

[View Property](#)

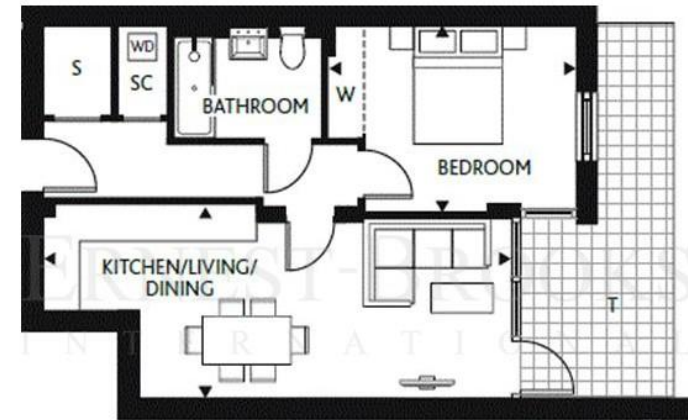
## OVERVIEW

Brand new apartment available to view! This one double bedroom first floor apartment is spread over (547 Sq. Ft) Plus expansive (129 Sq Ft) private terrace. Contemporary design throughout located in the brilliant new London Square Isleworth development. Open plan modern fitted kitchen and dining area, double bedroom with fitted wardrobes and a comfortable bathroom. East facing terrace overlooking the courtyard / gardens.

London Square Isleworth is situated a stone's throw from shops, restaurants, the River Thames and leafy open spaces, such as Kew Gardens and Richmond Park. The development also has brilliant transport links with Isleworth train station (Zone 4) is just a 3-minute walk. Where as many as six trains an hour will whisk you to Waterloo in less than 40 minutes.

## KEY FEATURES

- Recently complete 547sqft apartment 129sqft Terrace East Garden  
Aspect Close To Transport Tenure: 999 Years Leasehold Ground rent:  
£3250 Service Charge: £31,622 per annum for £31,200 PCM (4.3%  
Yield) Viewings welcome!



KITCHEN/LIVING/DINING  
7.88m x 3.25m 25'10" x 10'7"

BEDROOM  
4.15m x 3.06m 13'7" x 10'0"



