

SPINNEY-BROOKS INTERNATIONAL

Colindale Gardens, Reverence House, NW9 5JE

Price:
£ 465,000

Colindale Gardens, Reverence House, NW9 5JE

Price: £ 465,000 2 bedroom house

[View Property](#)

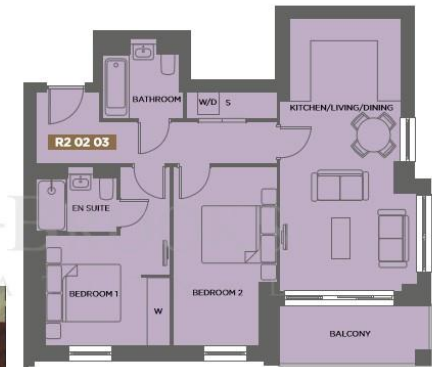
OVERVIEW

RARE PARK FACING Two bedroom two bathroom apartment spread over (731 Sq.Ft) plus balcony, Dual aspect looking over the park to the South and East. Available in Reverence House, Colindale Gardens, London, NW9.

The development set in over 9 acres of landscape gardens will breath new life into the area, the new community will benefit from over 2,900 new homes, cafes, restaurants and retail facilities along with its very own residents only gym and concierge service. This new destination has been for a lifestyle of convenience for all its residents.

KEY FEATURES

- 731 sqft Plus BalconyPak Facing Dual Aspect!Two Bedoom Two BathoomGym, Conciege and Steam RoomUnde Floo Heating ThroughoutEst. Sevice Chage: u00a333.00 psf paTenue: Lease 999 YeasEst Gound Rent: u00a33300 paCompletion due Septembe 2017*Not Available With Help To Buy*



VIEW OVER PARK



