



**Christchurch House, Caxton Street, SW1H 0PX**

Price:  
£ 530,000





# Christchurch House, Caxton Street, SW1H 0PX

Price: £ 530,000 1 bedroom house

[View Property](#)

## OVERVIEW

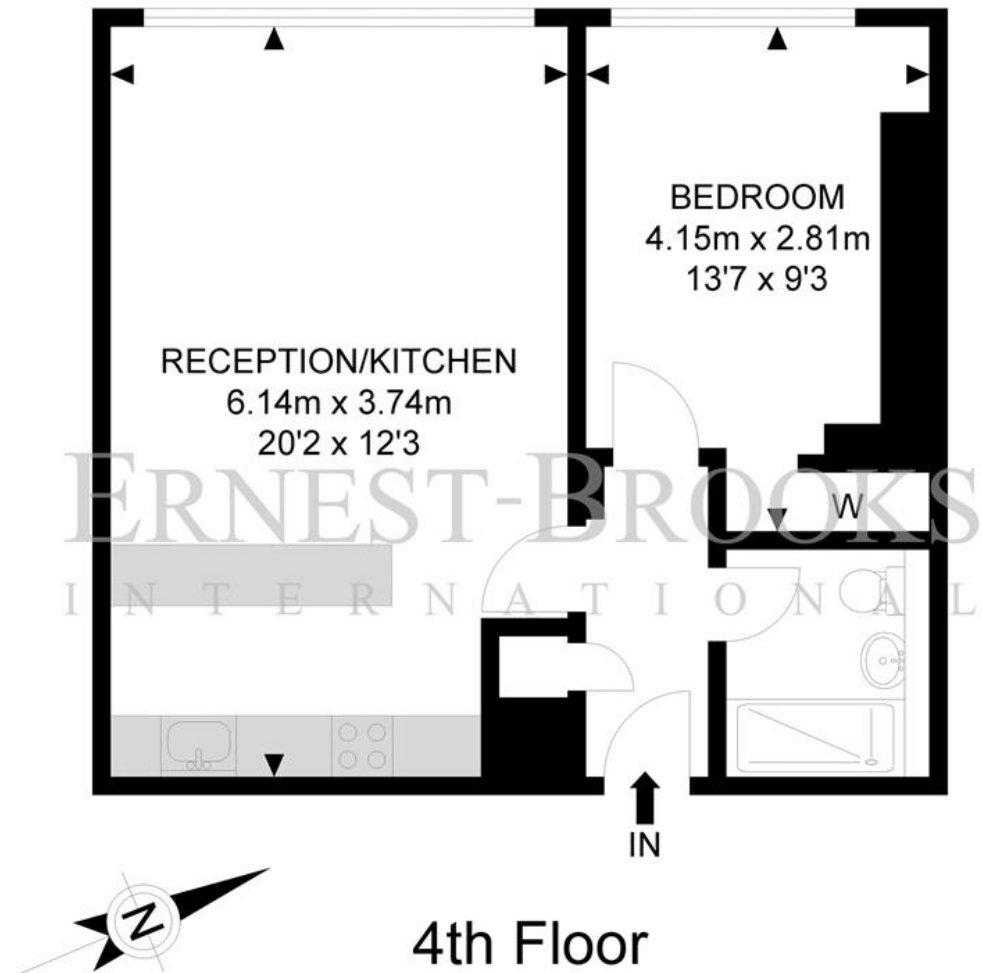
Well positioned one bedroom apartment, bright and airy feel spread over (443 sq. Ft) Located on the 4th floor within this purpose built development of Christchurch House located in the heart of Westminster.

The development is located close to an abundance of green spaces including St James's Park and Green Park and within close proximity to Buckingham Palace. The property is within easy reach of many amenities including restaurants, cafes and shops in Victoria, Westminster and Mayfair.

## KEY FEATURES

- Westminster Postcode Moments from St James Park Station Modern Finishes Throughout 4th Floor Apartment Current Rent: £3,425 per week Service Charge: £3,700 per annum Ground Rent: £250 per annum Tenure: Leasehold 184 years Must See Apartment Viewings Welcome!

# Christchurch House



APPROX. GROSS INTERNAL FLOOR AREA 442.39 SQ FT / 41.10 SQM

Whilst every attempt has been made to ensure the accuracy of the floor plan contained here, measurements of doors, windows, rooms and any other items are approximate and no responsibility is taken for any error, omission or mis-statement. This plan is for illustrative purposes only and should be used as such by any prospective purchaser. The service, system and appliances shown have not been tested and no guarantee as to their operability or efficiency can be given.

© SpacePhoto

Photography and Floor Plan



