

**Chorley Court, 24 Madeira Street, E14 6TS**

Price:  
£ 375,000





# Chorley Court, 24 Madeira Street, E14 6TS

Price: £ 375,000 1 bedroom house

[View Property](#)

## OVERVIEW

A sublime one double bedroom apartment situated on the 6th floor of the newly built Chorley court by Bellway Homes. Comprising of (539 Sqft) of internal living space this apartment is certainly an ideal First Time Buy or Buy to Let Investment

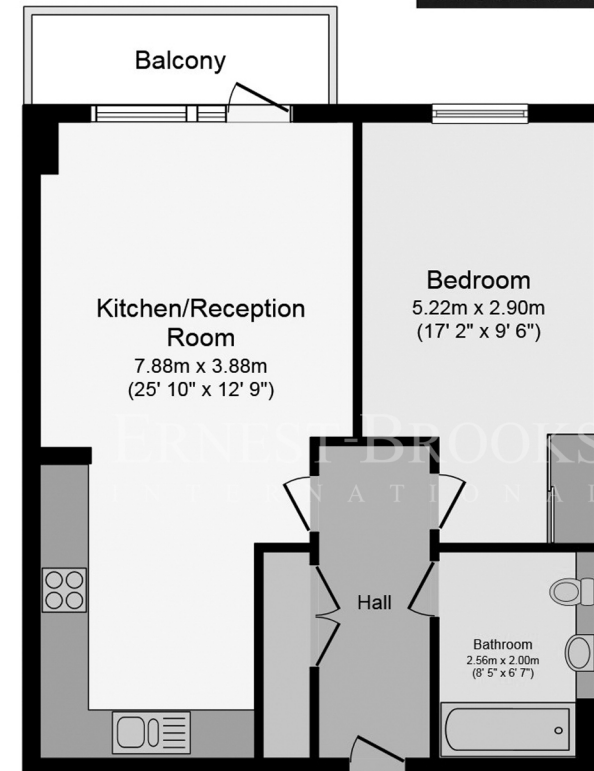
From entering the apartment the width of the hallway and over size of the property is apparent with an expansive open plan kitchen reception room, spectacular private balcony offering exceptional views, double bedroom with built in wardrobes and tiled bathroom

## KEY FEATURES

- One double bedroom with storage
- Development built in 2019
- Balcony with views over Canary Wharf
- Fully integrated kitchen
- Very well connected to transport links
- Close proximity to green open spaces
- On site Gym and cycle storage
- Floor to ceiling tiled bathroom
- Residence roof terrace with skyline view
- Concierge
- Viewings available

## Chorley Court

ERNEST-BROOKS  
INTERNATIONAL



### Sixth Floor Plan

Total floor area 50.2 m<sup>2</sup> (539 sq.ft.) approx

Whilst every attempt has been made to ensure the accuracy of the floor plan contained here, measurements of doors, windows, rooms and any other items are approximated and no responsibility is taken for any error, omission or mis-statement. This plan is for illustrative purposes only and should be used as such by prospective purchaser. The service, system and appliances shown have not been tested and no guarantee as to their operability or efficiency can be given.

Energy Performance Certificates

