



Chorley Court, 24 Madeira Street, E14 6TS

Price:
£ 375,000

Chorley Court, 24 Madeira Street, E14 6TS

Price: £ 375,000 1 bedroom house

[View Property](#)

OVERVIEW

A superb one double bedroom apartment located on the 6th floor of the recently completed Chorley Court by Bellway Homes. Offering 539 sq ft of internal living space, this apartment represents an excellent opportunity for a First Time Buyer or a Buy to Let investor.

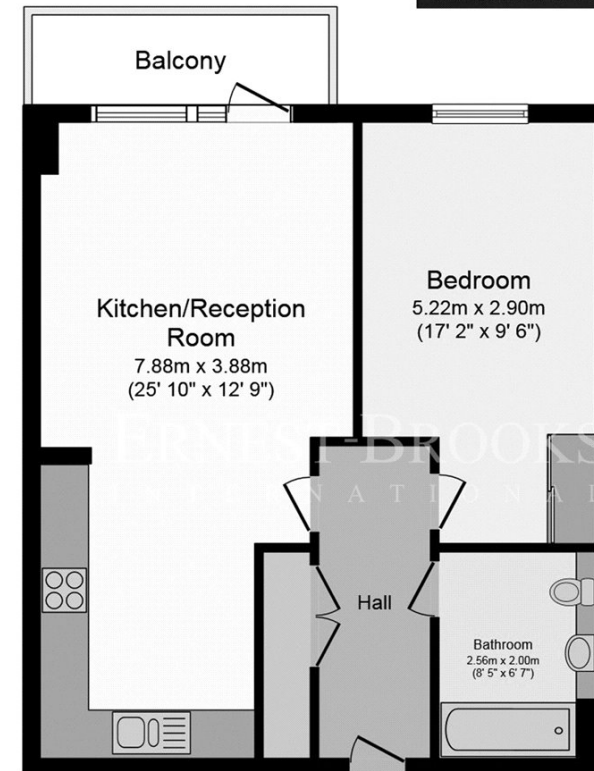
Upon entering the apartment, the generous width of the hallway and overall sense of space is immediately evident. The property features a large open-plan kitchen and reception area, a stunning private balcony with far-reaching views, a spacious double bedroom with built-in wardrobes, and a contemporary tiled bathroom.

KEY FEATURES

- One double bedroom with built-in storage
- Modern development completed in 2019
- Private balcony with Canary Wharf views
- Fully integrated kitchen
- Excellent transport links
- Close to green open spaces
- Residents 2019 gym and cycle storage
- Floor-to-ceiling tiled bathroom
- Roof terrace with skyline views
- Concierge service

Chorley Court

ERNEST-BROOKS
INTERNATIONAL



Sixth Floor Plan

Total floor area 50.2 m² (539 sq.ft.) approx

Whilst every attempt has been made to ensure the accuracy of the floor plan contained here, measurements of doors, windows, rooms and any other items are approximated and no responsibility is taken for any error, omission or mis-statement. This plan is for illustrative purposes only and should be used as such by prospective purchaser. The service, system and appliances shown have not been tested and no guarantee as to their operability or efficiency can be given.

Energy Performance Certificates

