

A large, semi-transparent watermark of the letters 'E', 'B', and 'I' in a serif font, centered in the middle of the image.

**Cassia Point, 2 Glasshouse Gardens, E20 1HW**

Price:

£ 425,000





# Cassia Point, 2 Glasshouse Gardens, E20 1HW

Price: £ 425,000 1 bedroom house

[View Property](#)



## Casia Point

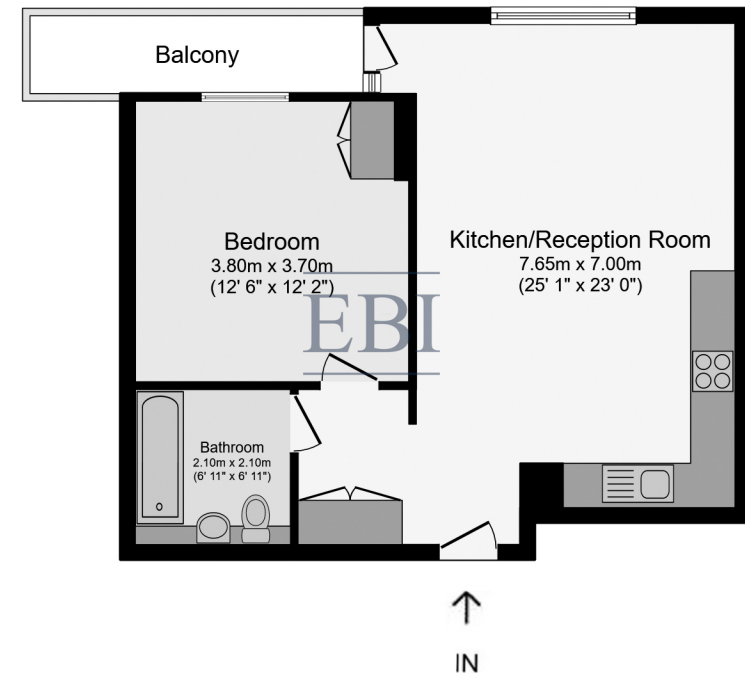
### OVERVIEW

This one-bedroom apartment is situated on the thirteenth floor of the sought-after Glasshouse Gardens development. It features a spacious open-plan living area with a fully integrated modern kitchen, a double bedroom with built-in storage, and a high-spec bathroom. The living area opens onto a private balcony with far-reaching views of London Stadium.

Residents of Glasshouse Gardens benefit from a range of amenities, including a private gym, a 24-hour concierge service, and a cycle store. The development is located moments from Queen Elizabeth Olympic Park and Westfield Stratford City, offering access to world-class shopping, dining, and entertainment options.

### KEY FEATURES

- Chain free
- One-bedroom apartment
- Thirteenth floor
- Private balcony
- Access to concierge services, a cycle store, and a gym
- - 0.4 MI STRATFORD STATION



**Thirteenth Floor Plan**  
Floor area 52.3 m<sup>2</sup> (563 sq.ft.)

Whilst every attempt has been made to ensure the accuracy of the floor plan contained here, measurements of doors, windows, rooms and any other items are approximated and no responsibility is taken for any error, omission or mis-statement. This plan is for illustrative purposes only and should be used as such by prospective purchaser. The service, system and appliances shown have not been tested and no guarantee as to their operability or efficiency can be given.

**Energy Performance Certificates**

