


The EBI logo is located in the top right corner of the image. It consists of the letters 'EBI' in a white, serif font, centered within a dark blue square. The square is positioned in the upper right corner of the overall image, which shows a row of brick terraced houses.

EBI

The main image is a photograph of a row of three-story brick terraced houses. The central house is the focus, featuring a white-painted ground floor with two arched doorways. The left doorway has a bright red door, and the right one has a dark door. Above the doors is a white decorative pediment. The upper two floors are made of yellowish-brown brick and have white-framed windows. The second floor has a central bay window with a decorative arched top. The third floor has a row of windows with white lintels. To the left of the central house, there is a large, leafless tree. To the right, a satellite dish is visible on the wall. The sky is a clear, pale blue. The entire image is framed by a dark blue border at the bottom, which contains the address and price information.

Carnarvon Road, Stratford, E15 4JW

Price:
£ 2,100 /pcm

Carnarvon Road, Stratford, E15 4JW

Price: £ 2,100 /pcm2 bedroom house

[View Property](#)

OVERVIEW

A superb two bedroom plus study (third bedroom) split-level apartment, enviably positioned on the top two floors of this impressive Victorian house.

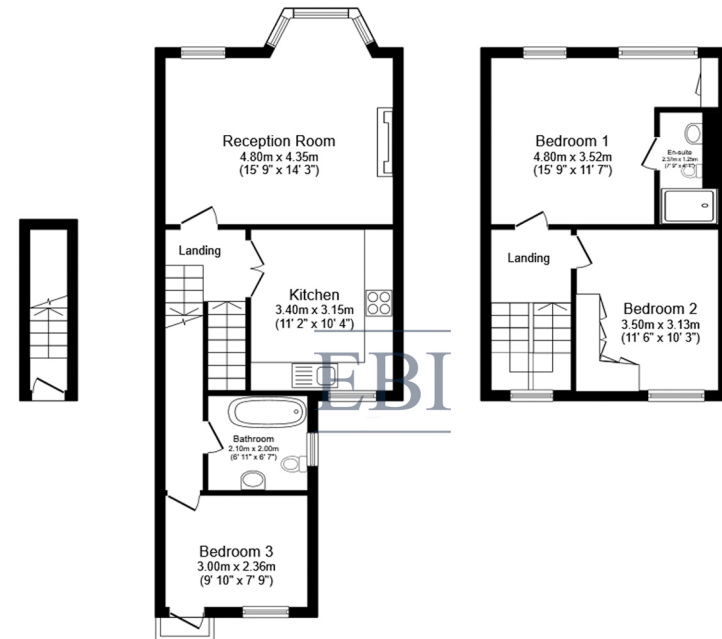
Recently fully refurbished, this stunning apartment features a brand-new kitchen with a sleek new backsplash and hob, all-new flooring throughout (including carpets and kitchen flooring), and fresh paint in every room, creating a bright and modern feel. While owner-occupied, the bathroom and en-suite were thoughtfully remodeled, and a new gas fireplace was installed, adding both warmth and character to the home.

KEY FEATURES

- Available now
- Recently refurbished
- Two bedroom
- Study (third bedroom)
- Two bathrooms
- Split-level maisonette
- Private rear garden
- 914 sq ft
- Just 0.4 miles to Maryland (Queen Elizabeth Line)

EBI
Selling
Properties

Carnarvon Road



Ground
Floor
Floor
area 2.7
m² (29
sq.ft.)

First Floor
Floor area 48.8 m² (525
sq.ft.)

Second Floor
Floor area 33.7 m² (363
sq.ft.)

Floor Plan

TOTAL: 85.2 m² (917 sq.ft.)



Whilst every attempt has been made to ensure the accuracy of the floor plan contained here, measurements of doors, windows, rooms and any other items are approximated and no responsibility is taken for any error, omission or mis-statement. This plan is for illustrative purposes only and should be used as such by prospective purchaser. The service, system and appliances shown have not been tested and no guarantee as to their operability or efficiency can be given.

Energy Performance Certificates

