



Bygrove Street, Poplar, E14 6DN

Price:
£ 420,000

Bygrove Street, Poplar, E14 6DN

Price: £ 420,000 3 bedroom house

[View Property](#)

OVERVIEW

A perfect maisonette brilliantly located in the heart of Poplar, a great property for investors or first time buyers.

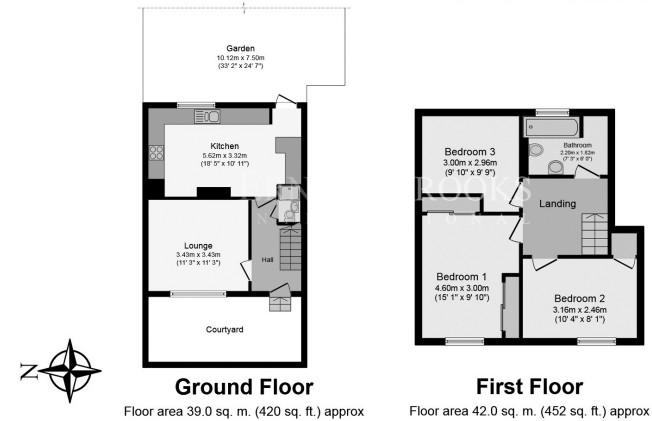
This property consists of two levels, on the bottom a lounge room and the kitchen dining area, which opens up on a beautifully maintained private garden. An enclosed green space perfect for enjoying a rare moment of tranquillity in a bustling area of East London. The second floor consists of three well-proportioned bedrooms and the family bathroom.

KEY FEATURES

- Maisonette
- Three bedrooms
- Arranged over two floors
- Exemplary garden
- Private patio entrance
- Compiled at over 870 Sq.Ft
- Leasehold; 88 years
- Nearby a plethora of shops and amenities
- Five minute walk to Langdon Park DLR Station
- *AVAILABLE TO VIEW 7 DAYS A WEEK*

34 Bygrove Street

ERNEST-BROOKS
INTERNATIONAL



Whilst every attempt has been made to ensure the accuracy of the floor plan contained here, measurements of doors, windows, rooms and any other items are approximated and no responsibility is taken for any error, omission or mis-statement. This plan is for illustrative purposes only and should be used as such by prospective purchaser. The service, system and appliances shown have not been tested and no guarantee as to their operability or efficiency can be given.

Energy Performance Certificates

