

EBI

EBI

Brooklyn Building, 32 Blackheath Road, SE10 8GA

Price:

£ 350,000

Brooklyn Building, 32 Blackheath Road, SE10 8GA

Price: £ 350,000 1 bedroom house

[View Property](#)

OVERVIEW

A well-presented one-bedroom apartment set on the second floor of the sought-after Brooklyn Building, forming part of the prestigious OneSE8 development by St James, offering approximately 515 sq ft of internal living space.

The apartment benefits from a well-balanced layout, featuring a spacious entrance hall with a useful utility and storage cupboard, leading through to a bright open-plan living area designed for both everyday living and entertaining. The contemporary kitchen is fully fitted with integrated appliances and flows seamlessly into the reception space, with direct access to a private balcony.

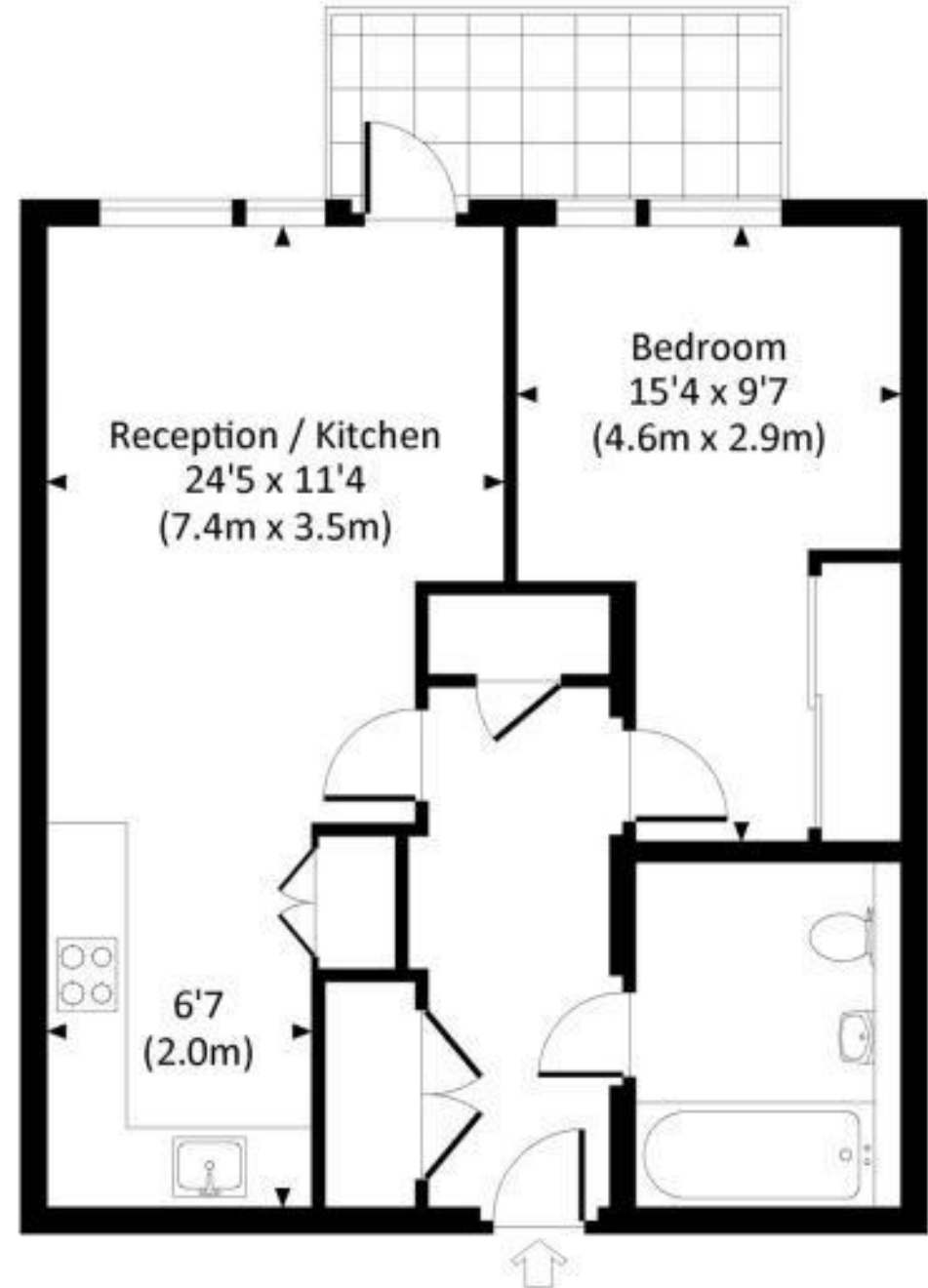
KEY FEATURES

- Second floor one bedroom apartment
- Approx. 515 sq ft internally
- Bright open plan living space
- Modern fitted kitchen
- Private balcony
- Double bedroom with built-in storage
- Contemporary bathroom suite
- St James built development
- Residents gym and swimming pool
- 24 hour concierge service
- On site shop and restaurant
- Next to Deptford Bridge DLR

BROOKLYN BUILDING, BLACKHEATH ROAD, SE10

Approx. gross internal area

515 Sq Ft. / 47.8 Sq M.



SECOND FLOOR



All measurements have been made in accordance with RICS Code of Measuring Practice which are approximate only and only for illustrative purposes. For the avoidance of doubt, Drawing Jonez Design shall not be liable for any reliance on these measurements. © 2021 www.drawingjonez.com 020 1500 9912

