

EBI

EBI

Brooklyn Building, 32 Blackheath Road, SE10 8GA

Price:
£ 350,000

Brooklyn Building, 32 Blackheath Road, SE10 8GA

Price: £ 350,000 1 bedroom house

[View Property](#)

OVERVIEW

A well-presented one-bedroom apartment set on the second floor of the sought-after Brooklyn Building, forming part of the prestigious OneSE8 development by St James, offering approximately 515 sq ft of well-designed internal living space.

The apartment benefits from a well-balanced and practical layout, featuring a spacious entrance hall with a useful utility and storage cupboard. This leads through to a bright open-plan living area, ideal for both everyday living and entertaining. The contemporary kitchen is fully fitted with integrated appliances and flows seamlessly into the reception space, with direct access to a private balcony.

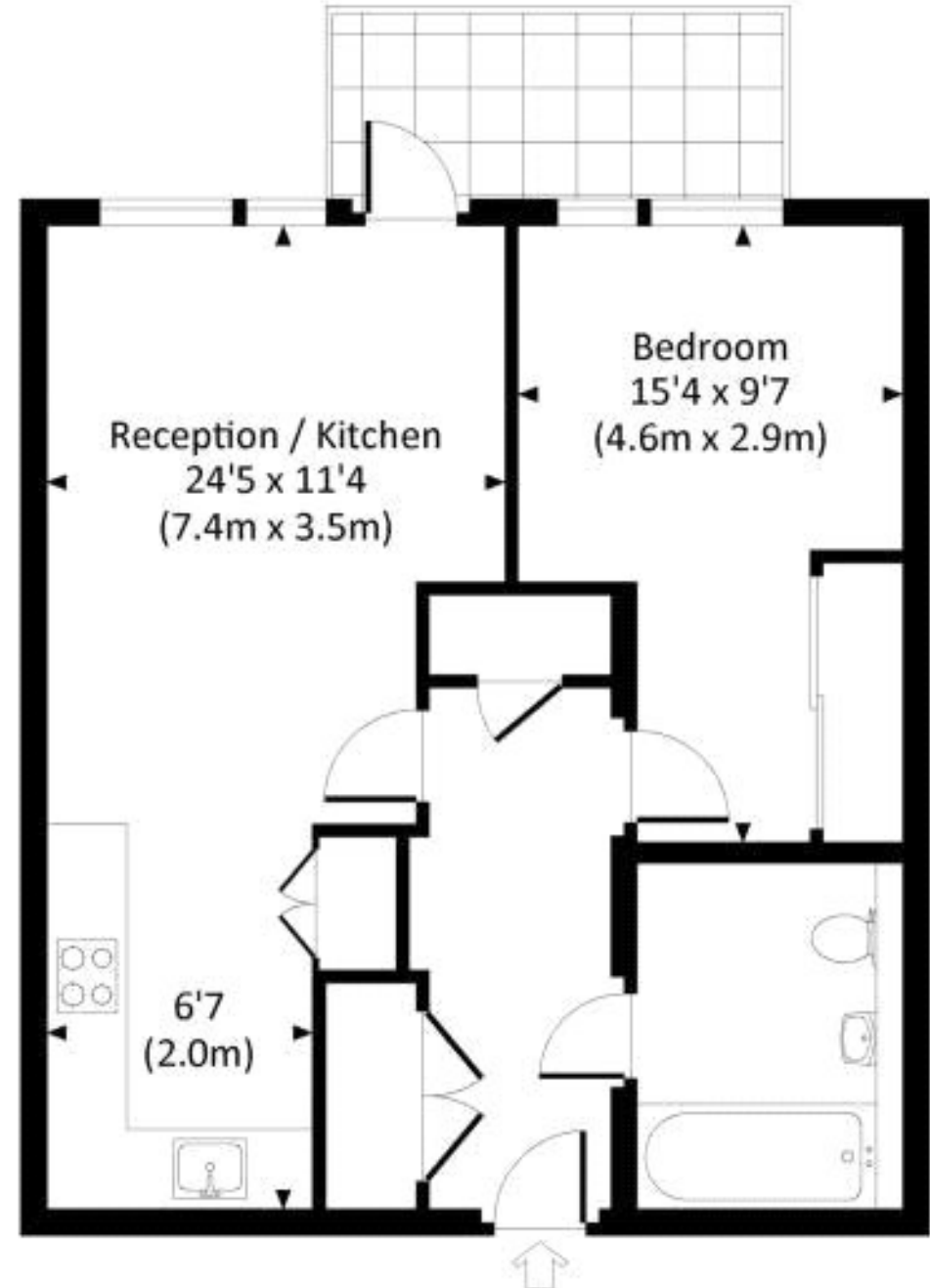
KEY FEATURES

- Second-floor one-bedroom apartment within the sought-after OneSE8 development
- Approximately 515 sq ft of well-designed internal living space
- Bright open-plan living and dining area with good natural light
- Modern fitted kitchen with integrated appliances and ample storage
- Private balcony providing valuable outdoor space
- Spacious double bedroom with built-in wardrobe storage
- Contemporary bathroom suite with quality fittings
- Residents' facilities include gym, swimming pool, and concierge service
- St James built development with on-site amenities including shop and restaurant
- Adjacent to Deptford Bridge DLR with fast links to Canary Wharf and the City

BROOKLYN BUILDING, BLACKHEATH ROAD, SE10

Approx. gross internal area

515 Sq Ft. / 47.8 Sq M.



SECOND FLOOR



All measurements have been made in accordance with RICS Code of Measuring Practice which are approximate only and only for illustrative purposes. For the avoidance of doubt, Ewing Jones Design shall not be liable for any reliance on these measurements. © 2017 www.brooklynbuilding.com 020 7500 9910

