



Bridge House Quay, London, E14 9QW

Price:

£ 595,000

Bridge House Quay, London, E14 9QW

Price: £ 595,000 2 bedroom house

[View Property](#)

OVERVIEW

Situated in a peaceful waterside gated enclave is a unique 2-bedroom first floor apartment with a separate ground floor studio/annex. Comprising of a total of 1301 Sqft of internal living space split between both floors this property offers excellent scope to redesign the layout and use the internal space to suit a buyer's specific needs.

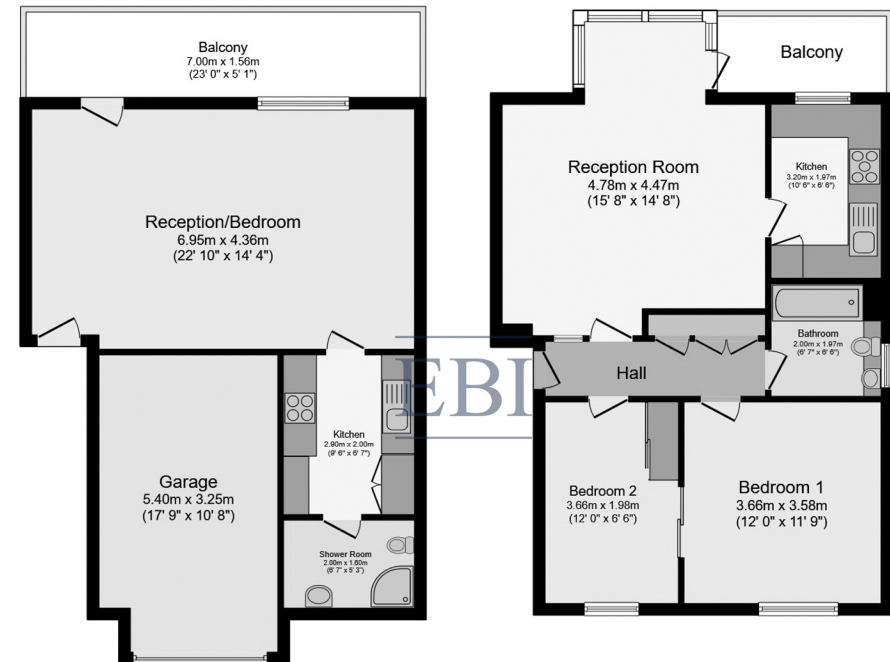
The 2-bedroom first floor apartment has a south facing waterside balcony overlooking Jamestown Harbour, Wood Wharf and Blackwall Basin. The ground floor studio has a sperate secure entrance with waterside quay and garage access. The studio also comprised of an open plan living space, separate kitchen, and shower W/C.

KEY FEATURES

- Unique Waterside Apartment
- 2 bedrooms with Balcony
- Separate Ground Floor Studio/Annex
- Garage
- Private parking
- Situated in a gated enclave.
- Offered chain free
- Share of Freehold
- Shared landscaped Gardens.

Bridge House Quay

ERNEST-BROOKS
INTERNATIONAL



Ground Floor

First Floor

Total floor area 120.9 m² (1,301 sq.ft.) approx



Whilst every attempt has been made to ensure the accuracy of the floor plan contained here, measurements of doors, windows, rooms and any other items are approximated and no responsibility is taken for any error, omission or mis-statement. This plan is for illustrative purposes only and should be used as such by prospective purchaser. The service, system and appliances shown have not been tested and no guarantee as to their operability or efficiency can be given.

