



Bouchon Point, 7 Cendal Crescent, E1 2FU

Price:
£ 3,250 /pcm

Bouchon Point, 7 Cendal Crescent, E1 2FU

Price: £ 3,250 /pcm2 bedroom house

[View Property](#)

OVERVIEW

A stunning two-bedroom apartment set within the prestigious Silk District development in Whitechapel.

Positioned on the an upper floor of Bouchon Point, this beautifully designed home enjoys spectacular panoramic views towards Canary Wharf, offering an exceptional blend of contemporary style and city living.

KEY FEATURES

- Upper floor
- Two bedroom
- Fully furnished
- Concierge
- Gymnasium
- Cinema and game room
- 24hr security

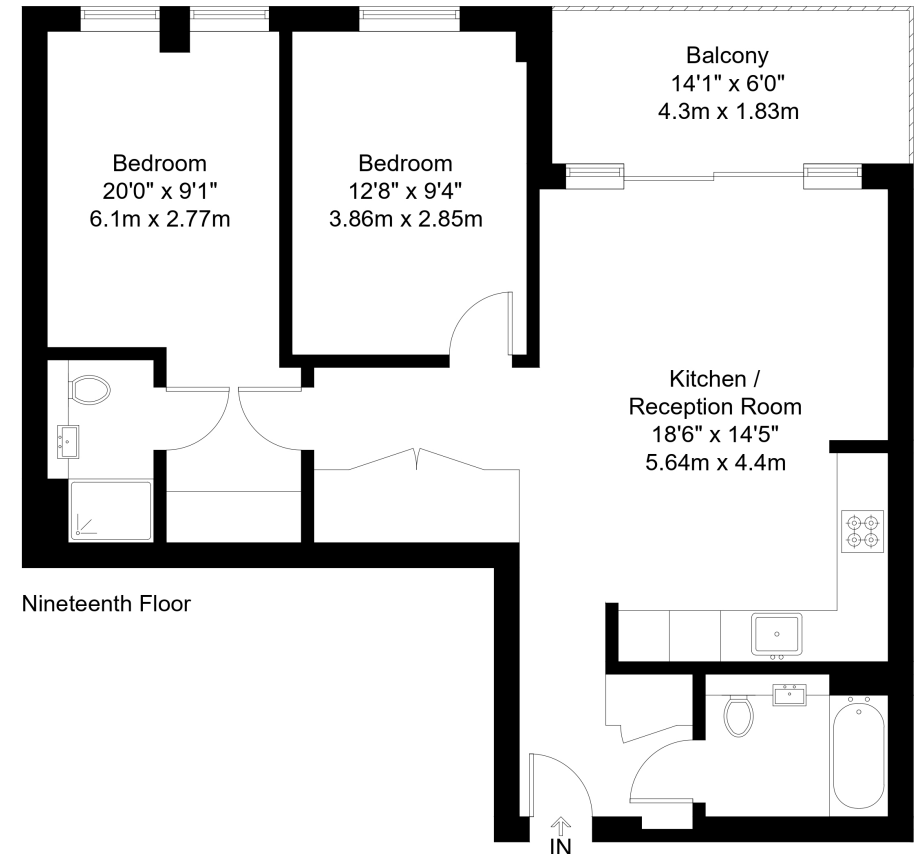
Bouchon Point, E1

Approx Gross Internal Area = 67.5 sq m / 727 sq ft

Balcony = 7.8 sq m / 84 sq ft

Total = 75.3 sq m / 811 sq ft

EBI



The Floor plan is not to scale and measurements and areas shown are approximate and therefore should be used for illustrative purposes only. The plan has been prepared in accordance with the RICS code of Measuring Practice and whilst we have confidence in the information produced it must not be relied on. Maximum lengths and widths are represented on the floor plan. If there is any aspect of particular importance, you should carry out or commission your own inspection of the property.

Copyright @ BleuPlan

