



Bouchon Point, 7 Cendal Crescent, E1 2FU

Price:
£ 3,000 /pcm

Bouchon Point, 7 Cendal Crescent, E1 2FU

Price: £ 3,000 /pcm2 bedroom house

[View Property](#)

OVERVIEW

Rare opportunity to rent this brand-new two-bedroom, two-bathroom apartment within the final phase of the highly sought-after Silk District development in Whitechapel, E1. Finished to an exceptional standard throughout, this beautifully appointed home offers approximately 765 sq. ft of stylish internal living space, combining contemporary design with premium resident facilities in one of East London's most exciting regeneration hotspots.

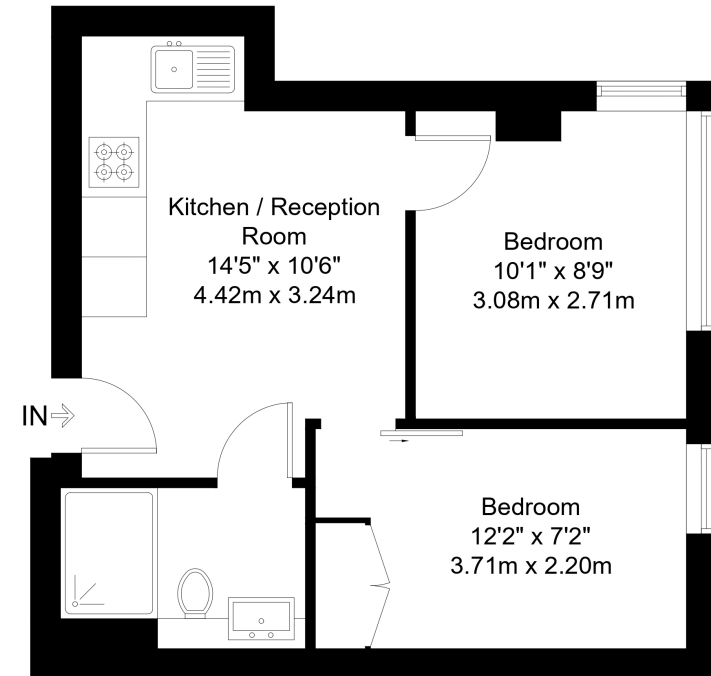
The apartment features a spacious open-plan reception room with a fully integrated designer kitchen, two generous double bedrooms with fitted wardrobes, two luxury bathrooms including an en-suite to the principal bedroom, tiled flooring and excellent storage. Offered fully furnished and ready for immediate occupation.

KEY FEATURES

- Two spacious double bedrooms throughout
- Two luxury bathrooms including en-suite
- Approx. 765 sq. ft internal accommodation
- Fully furnished to premium standard
- Open-plan reception and designer kitchen
- 24-hour concierge and security service
- Exclusive residents gym and cinema
- Landscaped rooftop gardens and lounge
- Moments from Whitechapel Elizabeth Line
- Excellent access to City and Canary Wharf

Heritage Avenue, NW9

Approx Gross Internal Area = 34.11 sq m / 367 sq ft



First Floor

The Floor plan is not to scale and measurements and areas shown are approximate and therefore should be used for illustrative purposes only. The plan has been prepared in accordance with the RICS code of Measuring Practice and whilst we have confidence in the information produced it must not be relied on. Maximum lengths and widths are represented on the floor plan. If there is any aspect of particular importance, you should carry out or commission your own inspection of the property.

Copyright @ BleuPlan

