



Babik Court, 132 Shacklewell Lane, E8 2FG

Price:
£ 425,000

Babik Court, 132 Shacklewell Lane, E8 2FG

Price: £ 425,000 1 bedroom house

[View Property](#)

OVERVIEW

Set within the secure gated surroundings of Babik Court, this beautifully presented one-bedroom ground floor apartment at 132 Shacklewell Lane, Hackney, E8, offers contemporary living in one of East London's most vibrant and sought-after neighbourhoods. Offered chain free and extending to approximately 628 sq ft, the property combines generous internal accommodation, a private terrace, and exceptional lifestyle appeal in the heart of Hackney.

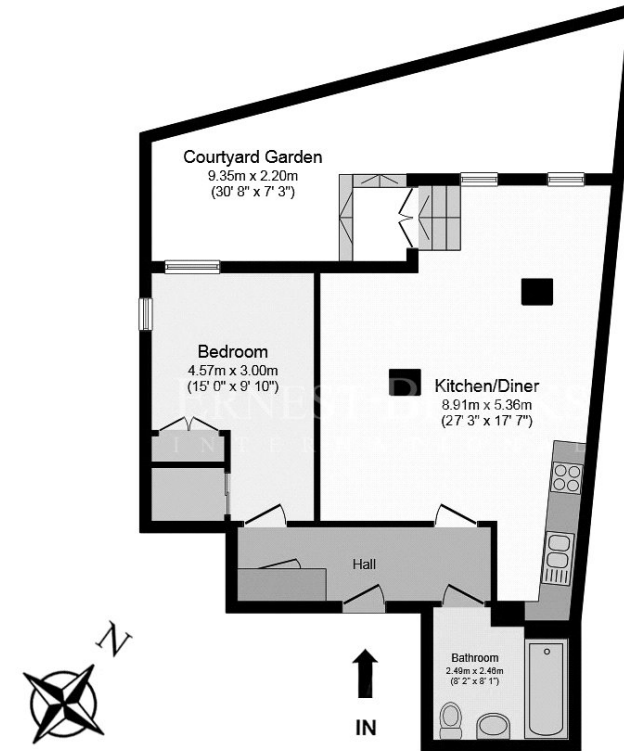
The apartment features a bright and spacious open-plan living and dining area, thoughtfully designed to maximise natural light and functionality. Large windows and direct access to the private terrace create a seamless connection between indoor and outdoor living, providing an ideal space for al fresco dining, entertaining, or simply relaxing in a peaceful setting.

KEY FEATURES

- Chain-free one-bedroom apartment
- Ground floor gated residence
- Approx. 628 sq ft living space
- Private terrace outdoor space
- Secure gated development
- Bright open-plan living area
- Modern fitted kitchen
- Excellent Hackney location
- Superb transport connectivity nearby
- Vibrant cafés and markets close by

Babik Court

ERNEST-BROOKS
INTERNATIONAL



Lower Ground Floor Plan

Floor area 60.0 sq. m. (628 sq. ft.) approx

Whilst every attempt has been made to ensure the accuracy of the floor plan contained here, measurements of doors, windows, rooms and any other items are approximated and no responsibility is taken for any error, omission or mis-statement. This plan is for illustrative purposes only and should be used as such by prospective purchaser. The service, system and appliances shown have not been tested and no guarantee as to their operability or efficiency can be given.

Energy Performance Certificates

