



Babik Court, 132 Shacklewell Lane, E8 2FG

Price:
£ 1,800 /pcm

Babik Court, 132 Shacklewell Lane, E8 2FG

Price: £ 1,800 /pcm1 bedroom house

[View Property](#)

OVERVIEW

Available Feb This furnished, meticulously kept one bedroom large ground level apartment located in the popular Babik Court, Shacklewell Lane Hackney E8.

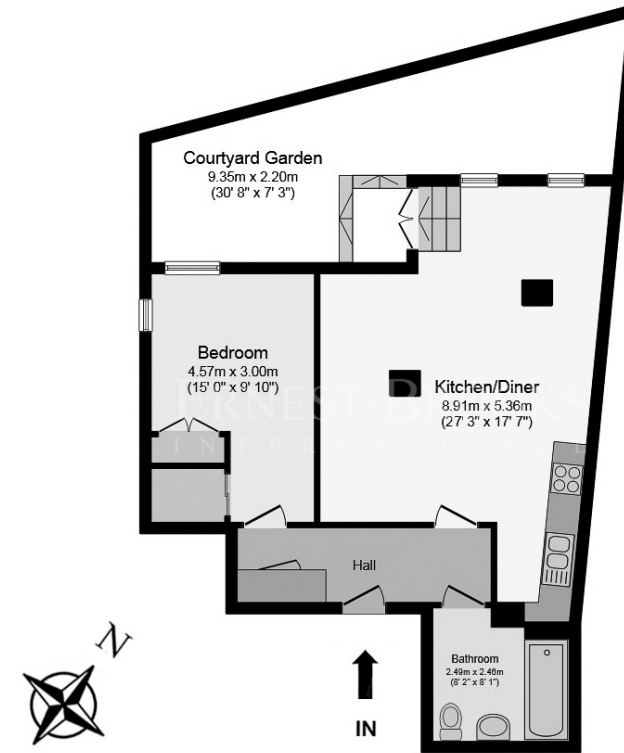
The apartment benefits from a combination of style and sophistication with a large open plan kitchen leading to a private terrace area. The building is located in peaceful gated development set off Shacklewell Lane and are located in one of the most vibrant areas of London.

KEY FEATURES

- Available late Feb
- Furnished
- 1 Bedroom - Split Level
- Private Terrace
- Ground Floor - 628 Sq Ft
- Close to Dalston Junction
- Classically Styled apartment
- Plethora of Shops and Convenience Within Walking Distance

Babik Court

ERNEST-BROOKS
INTERNATIONAL



Lower Ground Floor Plan

Floor area 60.0 sq. m. (628 sq. ft.) approx

Whilst every attempt has been made to ensure the accuracy of the floor plan contained here, measurements of doors, windows, rooms and any other items are approximated and no responsibility is taken for any error, omission or mis-statement. This plan is for illustrative purposes only and should be used as such by prospective purchaser. The service, system and appliances shown have not been tested and no guarantee as to their operability or efficiency can be given.

Energy Performance Certificates

