



Azure Building, E15 4QS

Price:
£ 419,950

Azure Building, E15 4QS

Price: £ 419,950 1 bedroom house

[View Property](#)

OVERVIEW

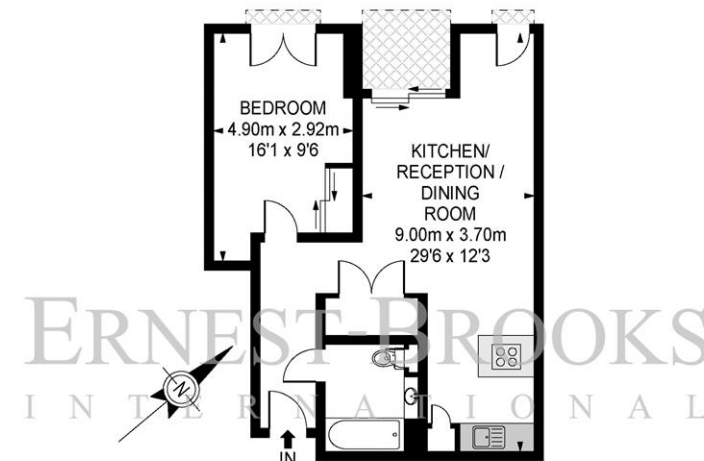
An amazing opportunity to invest in this new build apartment with fantastic outside space providing great views. Furniture pack included alongside a professional tenant in situ currently paying £360 PW = 4.45% Gross Yield. This (580 sqft) apartment is set within Telfords new Stratosphere Tower development and is located in the Azure Building, Stratford, E15.

Property comprises of a spacious living area with floor to ceiling windows and spectacular views. Open plan kitchen with Smeg integrated appliances and space for dining. Master bedroom with fitted wardrobes and ensuite shower room with rainfall shower and storage.

KEY FEATURES

- Recently Completed 6th Floor Apartment Tenant in Situ Offering 4.45% Gross Yield Concierge Services & Residents Gymnasium Private West Facing Balcony Communal Roof Gardens Secure Bicycle Storage Viewings Welcome! Tenure: Leasehold 999 years Estimated Service Charge: £33.50 per square foot Ground Rent: £350 per annum

Stratosphere



6th Floor

APPROX GROSS INTERNAL FLOOR AREA 579.11 SQ FT - 53.80 SQ M

APPROX GROSS INTERNAL FLOOR AREA INC. BALCONY AREA 622.06 SQ FT - 57.04 SQ M

Whilst every attempt has been made to ensure the accuracy of the floor plan contained here, measurements of doors, windows, rooms and any other items are approximate and no responsibility is taken for any error, omission or mis-statement. This plan is for illustrative purposes only and should be used as such by any prospective purchaser. The service, system and appliances shown have not been tested and no guarantee as to their operability or efficiency can be given.

© SpacePhoto
Photography and Floor Plan

