

ERNEST PROOKS
INTERNATIONAL**Artisan Apartments, Legacy Wharf, E15 2ZF**

Price:
£ 475,000

Artisan Apartments, Legacy Wharf, E15 2ZF

Price: £ 475,000 2 bedroom house

[View Property](#)

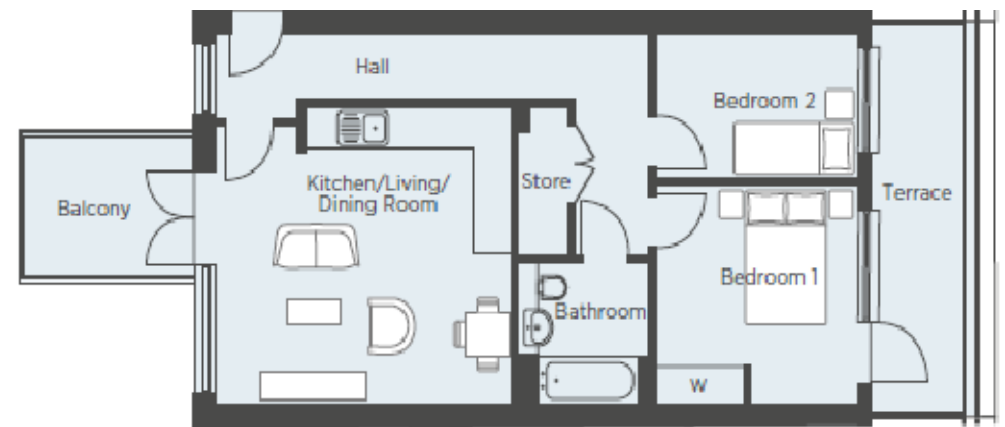
OVERVIEW

An exceptional two bedroom apartment located on the 7th floor with East Facing views towards the Bow Back Gardens and Olympic Park.

Luxury two bedroom East facing apartment with a private terrace area & balcony! Legacy Wharf is a contemporary development of new homes in Stratford, an increasingly sought-after residential area of east London that has in recent years undergone significant regeneration and benefits from a wealth of local amenities.

KEY FEATURES

- 2 bedroom Apartment
- Brand New apartment with Private Terrace & Balcony
- Residents fitness centre & communal gardens
- Residents concierge services
- Residents secure cycle storage
- Moments from Pudding Mill Lane DLR
- Unfurnished
- 7th Floor Apartment
- Easily Accessible To Westfield Shopping Centre



TYPE 2B 3P 11

Two Bedroom Apartment

Kitchen/Living/ Dining Room	5.025m x 4.595m	16'6" x 15'1"
Bedroom 1	3.480m x 3.395m	11'5" x 11'2"
Bedroom 2	3.480m x 2.250m	11'5" x 7'5"

