



Arnhem Wharf, 2 Arnhem Place, E14 3RU

Price:

£ 575,000

Arnhem Wharf, 2 Arnhem Place, E14 3RU

Price: £ 575,000 2 bedroom house

[View Property](#)

OVERVIEW

Set within the peaceful riverside setting of Arnhem Wharf, this beautifully renovated two-bedroom, two-bathroom apartment at 2 Arnhem Place, E14, offers stylish waterfront living with uninterrupted west-facing views across the River Thames. Combining contemporary interiors, a large private terrace, share of freehold ownership, and allocated off-street parking, the property presents an exceptional opportunity in one of the Isle of Dogs' most desirable residential enclaves.

The apartment has been fully renovated throughout to an excellent standard, creating a turnkey home finished with modern design and high-quality detailing. The spacious open-plan living and dining area is filled with natural light and flows seamlessly onto the expansive private terrace, perfectly positioned to enjoy afternoon sun and far-reaching river views. The terrace offers an ideal setting for outdoor dining, entertaining, or simply relaxing beside the water.

KEY FEATURES

- Two-bedroom two-bathroom apartment
- Share of freehold ownership
- Large west-facing private terrace
- Direct River Thames views
- Fully renovated throughout
- Contemporary kitchen and bathrooms
- Allocated off-street parking space
- Bright open-plan living area
- Excellent Isle of Dogs location
- Strong lifestyle and investment appeal

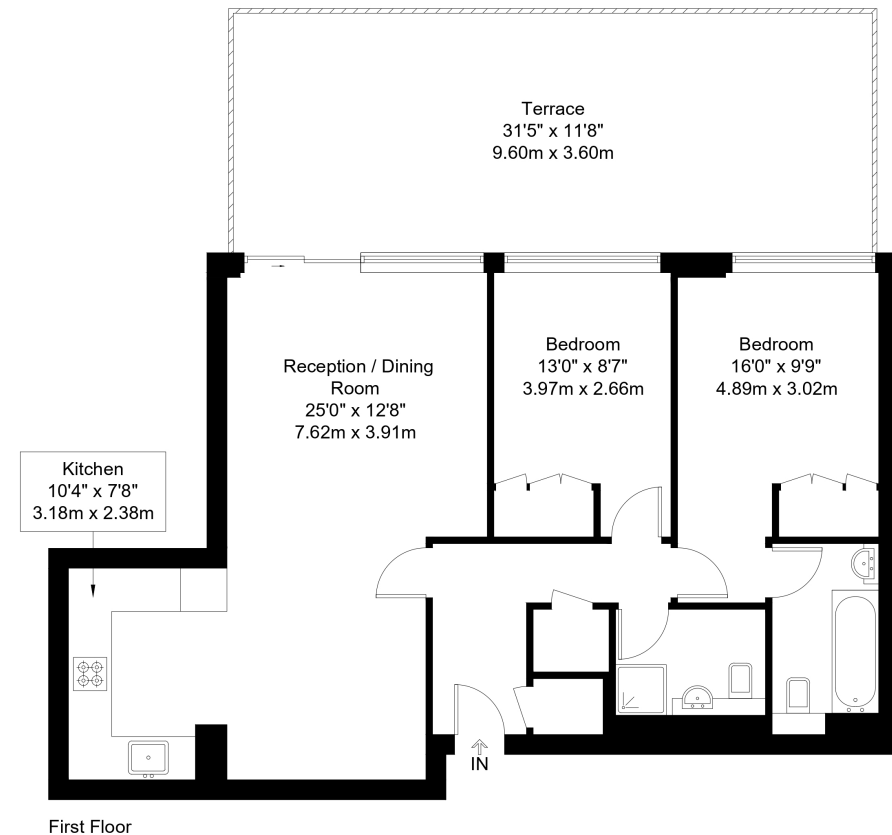
Arnhem Place, E14

Approx Gross Internal Area = 78.04 sq m / 840 sq ft

Terrace = 34.56 sq m / 372 sq ft

Total = 112.6 sq m / 1212 sq ft

EBI



The Floor plan is not to scale and measurements and areas shown are approximate and therefore should be used for illustrative purposes only. The plan has been prepared in accordance with the RICS code of Measuring Practice and whilst we have confidence in the information produced it must not be relied on. Maximum lengths and widths are represented on the floor plan. If there is any aspect of particular importance, you should carry out or commission your own inspection of the property.
Copyright @ BleuPlan

Energy Performance Certificates

