



Arena Tower, 25 Crossharbour Plaza, E14 9SS

Price:

£ 475,000

Arena Tower, 25 Crossharbour Plaza, E14 9SS

Price: £ 475,000 1 bedroom house

[View Property](#)

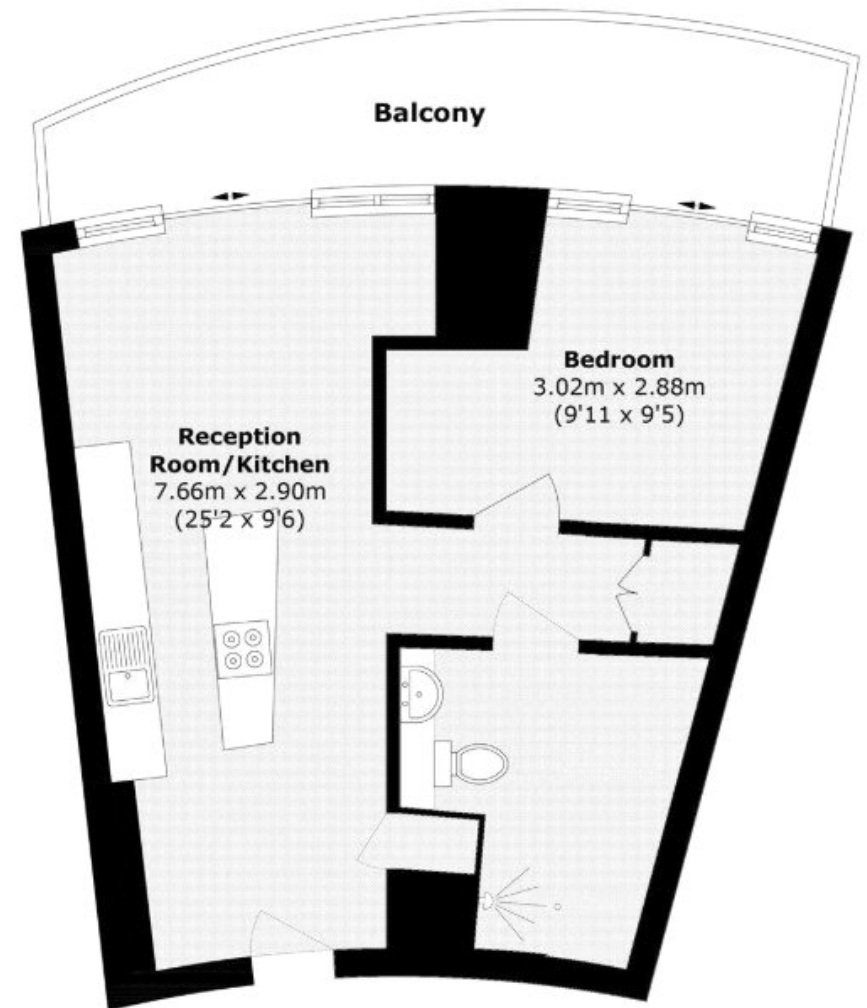
OVERVIEW

Set on the 20th floor of the landmark Arena Tower, this well-presented one-bedroom apartment enjoys a large private balcony with impressive far-reaching views across Canary Wharf and the London skyline.

The property offers a bright and contemporary living space, featuring a modern open-plan kitchen complete with fully integrated SMEG appliances. Floor-to-ceiling windows flood the apartment with natural light, enhancing the sense of space throughout. The bedroom is generously sized and benefits from a built-in wardrobe, while the sleek bathroom is finished to a high specification and includes underfloor heating.

KEY FEATURES

- One-bedroom apartment positioned on the 20th floor with far-reaching views
- Private balcony overlooking the Canary Wharf skyline
- Bright open-plan living space with floor-to-ceiling windows
- Contemporary kitchen with fully integrated SMEG appliances
- Generous double bedroom with built-in wardrobe
- 24-hour concierge service for added security and convenience
- Residents' facilities including gym, swimming pool and private cinema
- EWS1 compliant with approximately 980-year lease remaining
- Ideally located close to Crossharbour and South Quay DLR stations
- Approximately 0.8 miles from Canary Wharf Jubilee Line station



Total area (approx.): 52.0 sq. m (559.7 sq. ft)
Balcony area (approx.): 15.5 sq. m (166.8 sq. ft)

