



Andersens Wharf, 20 Copenhagen Place, E14 7DX

Price:
£ 650,000

Andersens Wharf, 20 Copenhagen Place, E14 7DX

Price: £ 650,000 3 bedroom house

[View Property](#)

OVERVIEW

Welcome to your new waterfront oasis in the heart of London's vibrant E14 district! This stunning 3-bedroom apartment in Andersens Wharf offers the perfect blend of modern luxury, panoramic canal views, and urban convenience.

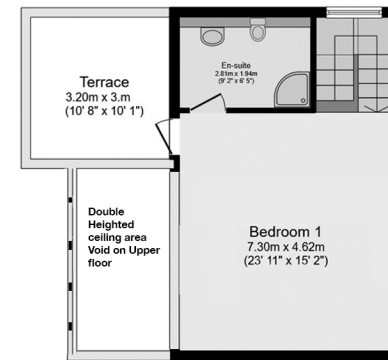
Step into a generous open-plan living space that's flooded with natural light, thanks to large windows that frame breathtaking views of the Limehouse canal. The living area is perfect for both relaxation and entertaining, with plenty of room for your preferred furniture arrangement.

KEY FEATURES

- Prime riverside location in the heart of E14.
- Stunning panoramic views of the Limehouse canal.
- Spacious open-plan living area with ample natural light.
- Modern and well-equipped kitchen with sleek countertops.
- Three generously sized bedrooms for your comfort.
- Master bedroom with en-suite bathroom and bathtub.
- Additional bathrooms with high-quality fixtures.
- Private balcony for relaxing and enjoying river views.
- Secure parking included for your convenience.
- Close proximity to Canary Wharf, London City Airport, and the City of London.
- Walking distance to DLR station for easy commuting.
- Building amenities include a concierge service, gym, and communal gardens.
- Experience waterfront living at its finest.
- Perfect for families, professionals, and investors.
- Don't miss the opportunity to make this your new home. Contact us for a viewing today!

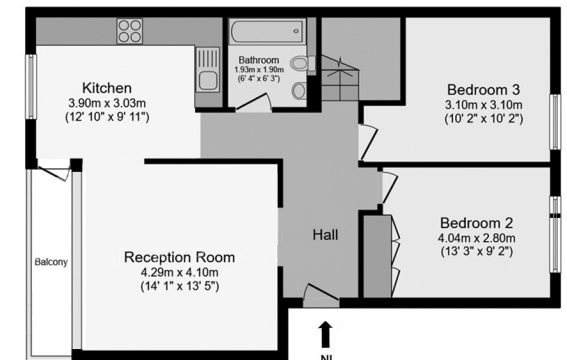
Anderson Wharf

ERNEST-BROOKS
INTERNATIONAL



Top Floor

Floor area 33.1 sq.m. (357 sq.ft.) approx



Ground Floor

Floor area 67.8 sq.m. (730 sq.ft.) approx



4th Floor Plan

Total floor area 100.9 sq.m. (1,087 sq.ft.) approx

Whilst every attempt has been made to ensure the accuracy of the floor plan contained here, measurements of doors, windows, rooms and any other items are approximated and no responsibility is taken for any error, omission or mis-statement. This plan is for illustrative purposes only and should be used as such by prospective purchaser. The service, system and appliances shown have not been tested and no guarantee as to their operability or efficiency can be given.

