

ERNEST-BROOKS
INTERNATIONAL

Alina Court, 58 Lomond Grove, SE5 7LE

Price:
£ 595,000

Alina Court, 58 Lomond Grove, SE5 7LE

Price: £ 595,000 3 bedroom house

[View Property](#)

OVERVIEW

Welcome to Alina Court, a stunning residential complex nestled in the heart of Camberwell, renowned for its vibrant community atmosphere and convenient location. This exclusive property boasts a luxurious 3-bedroom apartment situated on the fourth floor, offering unparalleled comfort and style.

Upon entering, you are greeted by a spacious and elegantly designed living space flooded with natural light, creating a warm and inviting ambiance. The modern open-plan layout seamlessly connects the living, dining, and kitchen areas, perfect for both entertaining guests and everyday living.

KEY FEATURES

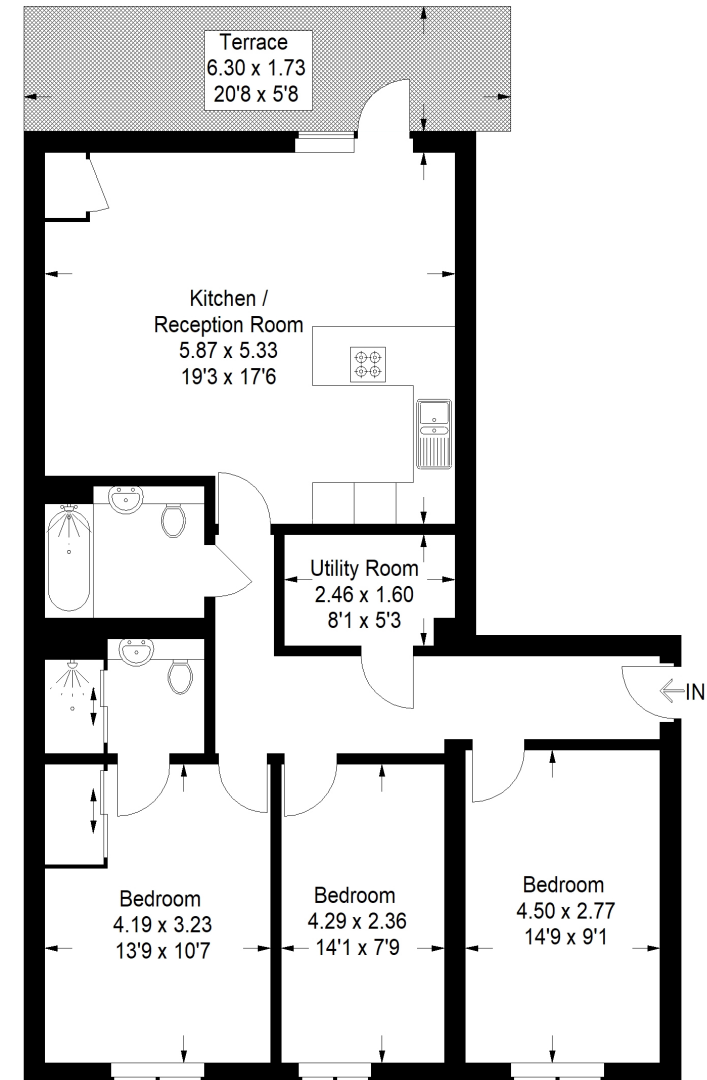
- **Top Floor Apartment:** Enjoy the privacy and tranquility of being situated on the top floor of Alina Court, offering stunning views and a peaceful ambiance.
- **Three Bedrooms:** This spacious apartment features three bedrooms, providing ample space for families or those needing extra room for guests or home office setups.
- **Modern Design:** Experience contemporary living with a stylish and modern interior design, featuring clean lines, high-quality finishes, and tasteful decor throughout.
- **Open-Plan Layout:** The apartment boasts an open-plan layout, seamlessly integrating the living, dining, and kitchen areas, perfect for both entertaining and everyday living.
- **Master Suite with Ensuite:** Retreat to the luxurious master suite, complete with its own ensuite bathroom for added convenience and privacy.
- **Balcony:** Step outside onto your private balcony and take in the breathtaking views of the surrounding neighborhood, providing the perfect spot for relaxation or outdoor dining.
- **Convenient Location:** Located in the desirable neighborhood of Camberwell, residents of Alina Court enjoy easy access to a range of amenities, including shops, cafes, parks, and excellent transport links for commuting to the city.

Alina Court, SE5

Approximate Gross Internal Area
94.9 sq m / 1021 sq ft



ERNEST-BROOKS
INTERNATIONAL



Fourth Floor

This plan is for layout guidance only. Not drawn to scale unless stated. Windows and door openings are approximate. Whilst every care is taken in the preparation of this plan, please check all dimensions, shapes and compass bearings before making any decisions reliant upon them. (ID1045305)

