



Acer Heights, Parkside Avenue, SE10 8GZ

Price:

£ 2,275 /pcm

Acer Heights, Parkside Avenue, SE10 8GZ

Price: £ 2,275 /pcm2 bedroom house

[View Property](#)

OVERVIEW

Welcome to this stylish and spacious two-bedroom apartment, ideally situated in the sought-after Arden, SE10 8GE - Parking included.

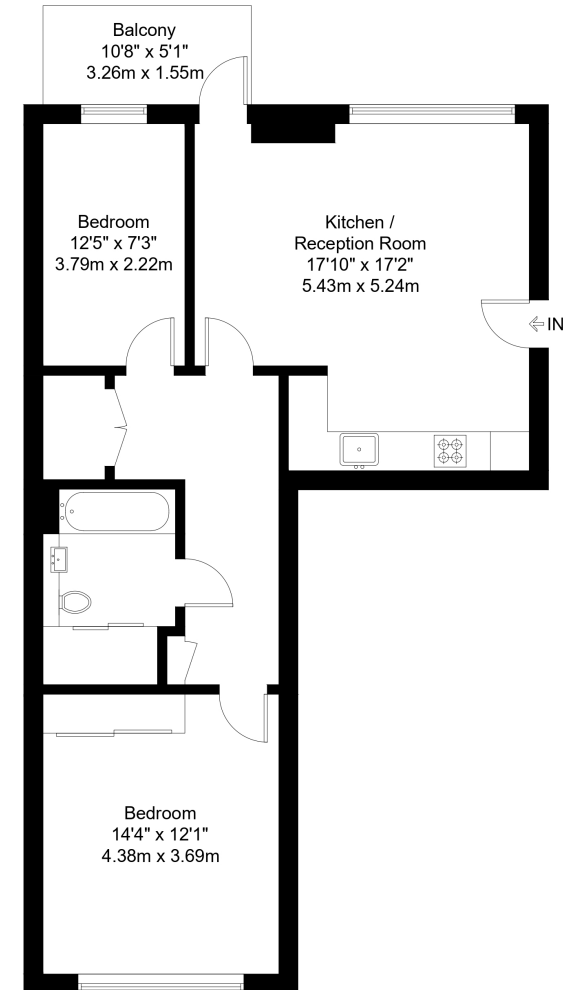
Designed with modern living in mind, the property boasts two generously sized bedrooms and one bathroom ensuring comfort. The bright open-plan kitchen and living area offers the perfect setting for entertaining, complete with high-quality appliances and excellent storage solutions.

KEY FEATURES

- Two bedroom
- Balcony
- Concierge
- Unfurnished
- Fitness suite
- Cinema room
- Parking included
- Excellent transport links
- Communal gardens

Acer Heights, SE10

Approx Gross Internal Area = 70.4 sq m / 758 sq ft
Balcony = 5.1 sq m / 55 sq ft
Total = 75.5 sq m / 813 sq ft



Second Floor

The Floor plan is not to scale and measurements and areas shown are approximate and therefore should be used for illustrative purposes only. The plan has been prepared in accordance with the RICS code of Measuring Practice and whilst we have confidence in the information produced it must not be relied on. Maximum lengths and widths are represented on the floor plan. If there is any aspect of particular importance, you should carry out or commission your own inspection of the property.

Copyright @ BleuPlan

