



41 Millharbour, South Quay, E14 9NB

Price:

£ 2,700 /pcm

41 Millharbour, South Quay, E14 9NB

Price: £ 2,700 /pcm2 bedroom house

[View Property](#)

OVERVIEW

Stunning two bedroom / two bathroom apartment with unrivalled panoramic dock views and resident parking!

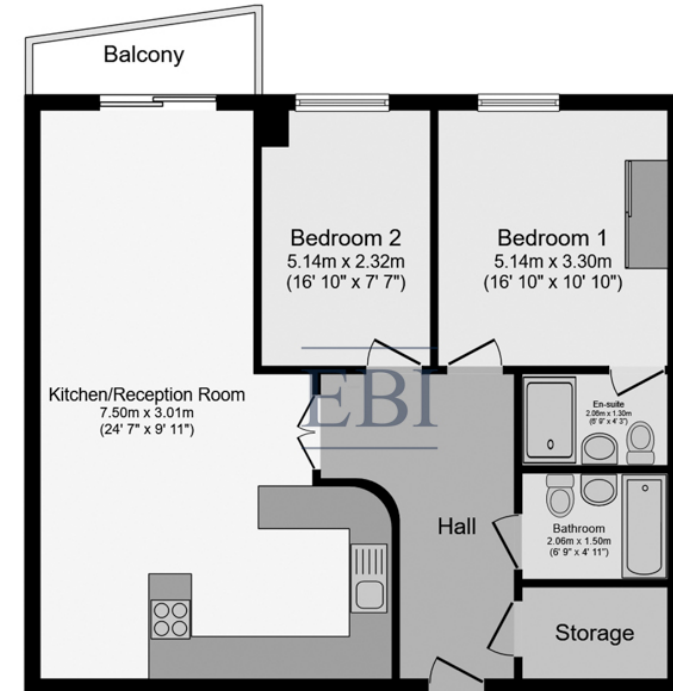
This stylish 7th-floor apartment, spanning approximately 775 sq. ft., offers breathtaking, uninterrupted views over Millwall Dock. Boasting an open and airy layout, this property features 2 generously-sized double bedrooms, 2 contemporary bathrooms (including a master en-suite), and a sleek open-plan reception area that seamlessly flows into a fully-fitted kitchen. Step out onto your private balcony to enjoy serene water views – a perfect space for relaxation or entertaining.

KEY FEATURES

- Available March
- Two bedrooms
- 7th floor
- Two modern bathrooms (one en-suite)
- Furnished
- 24-hour concierge for added security
- Rent includes heating, hot and cold water
- Private allocated parking

EBI
EST
1982

Millharbour



Seventh Floor

Floor area 74.3 m² (775 sq.ft.)

Whilst every attempt has been made to ensure the accuracy of the floor plan contained here, measurements of doors, windows, rooms and any other items are approximated and no responsibility is taken for any error, omission or mis-statement. This plan is for illustrative purposes only and should be used as such by prospective purchaser. The service, system and appliances shown have not been tested and no guarantee as to their operability or efficiency can be given.

Energy Performance Certificates

