



EBI

3 Merchant Square, Paddington, W2 1AZ

Price:
£ 700,000

3 Merchant Square, Paddington, W2 1AZ

Price: £ 700,000 1 bedroom house

[View Property](#)

OVERVIEW

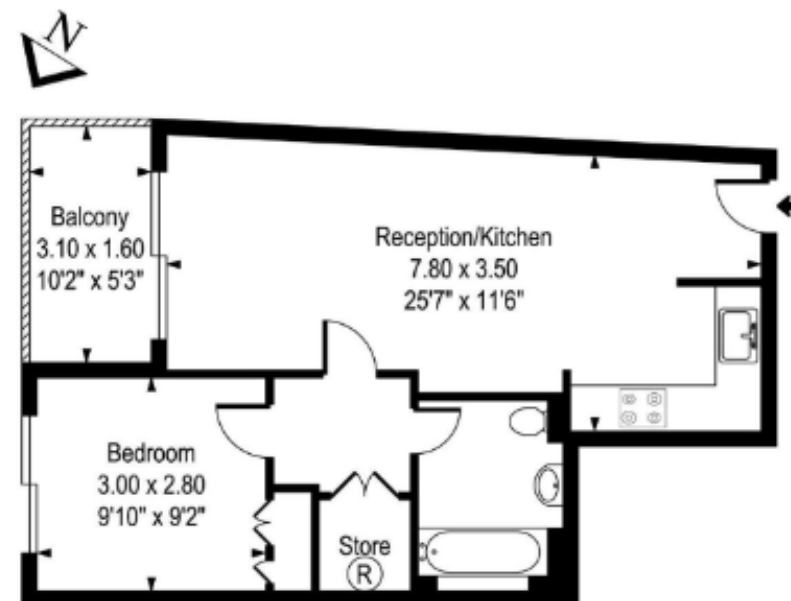
Located on the 4th floor of one of Paddington Basin's most desirable developments is this well presented one bedroom apartment to let. Offering over 575 square feet of lateral living space and with accommodation comprising a spacious open plan kitchen and reception room with balcony, one double bedroom with fitted wardrobes and a tiled bathroom with bath and shower. Finished with neutral décor, hard wood floors and benefiting from air cooling and underfloor heating.

The buildings amenities include 24 hour concierge, communal terraces, communal work spaces, a residences cinema room and lift access.

KEY FEATURES

- Chain free
- One bedroom apartment
- 4th Floor
- 479 sq ft
- Balcony
- 5 min walk to Paddington or Edgware Road
- Concierge residents cinema, lounge & terrace

Merchant Square East London, W2



Fourth Floor

Approx Gross Internal Area 479 Sq Ft - 44.50 Sq M

Whilst every attempt has been made to ensure the accuracy of the floor plan contained here, measurements of the doors, windows, rooms and any other items are approximate and no responsibility is taken for any error, omission, or mis-statement. This plan is for illustrative purposes only and should be used as such by any prospective purchaser. The services, systems and appliances shown have not been tested and no guarantee as to their operability or efficiency can be given.

Energy Performance Certificates

Energy Efficiency Rating

