



28 Mornington Grove, E3 4AB

Price:

£ 375,000

28 Mornington Grove, E3 4AB

Price: £ 375,000 2 bedroom house

[View Property](#)

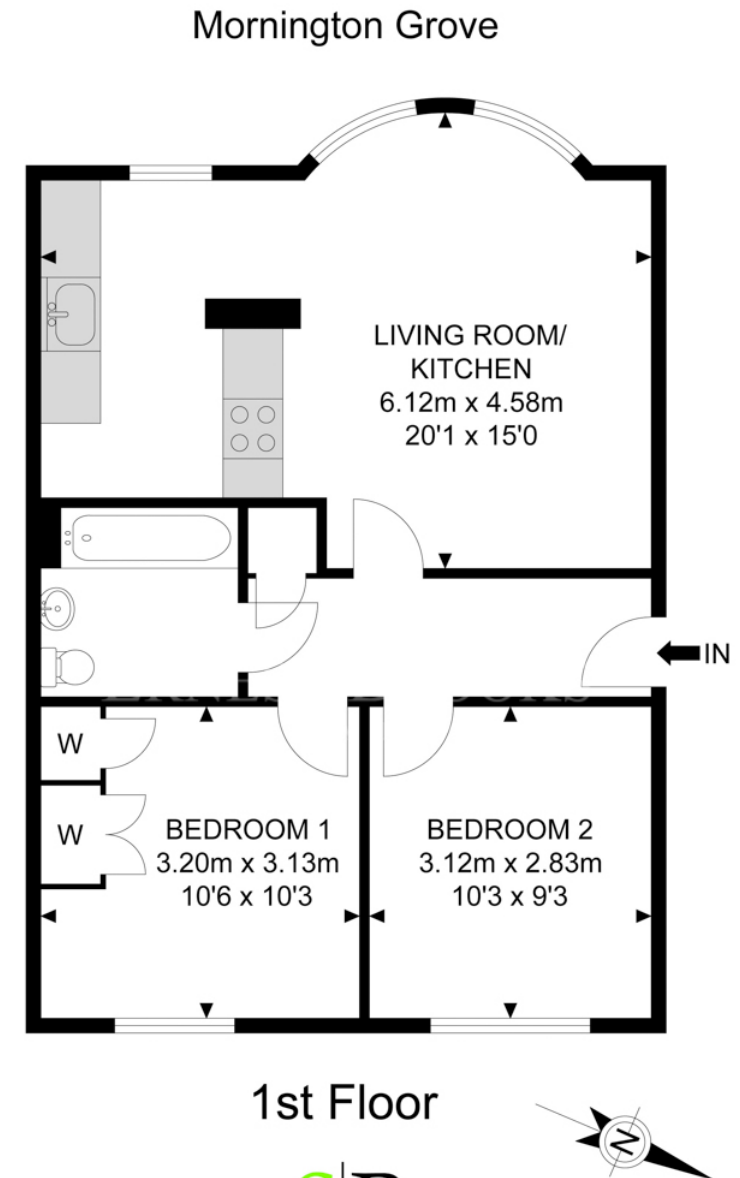
OVERVIEW

Situated in a tranquil cul de sac just around the corner from Bow Road and Bow Church stations is this delightfully vibrant purpose built apartment.

The property is extremely well-presented throughout, situated on the first floor of this development comprising; two double bedrooms, a spacious open-plan lounge/kitchen and a neutral-toned contemporary bathroom.

KEY FEATURES

- Two Bedroom Apartment
- First Floor
- Purpose Built Development
- Small Development with Only 3 Apartments
- West Facing Aspect
- Cul de Sac
- Bow Road Tube Station 0.1 Miles
- Permit Parking Available
- Close Proximity to Shopping Amenities
- Chain Free



SPACE PHOTO

APPROX. GROSS INTERNAL FLOOR AREA 570.48 SQ FT / 53.0 SQM

Whilst every attempt has been made to ensure the accuracy of the floor plan contained here, measurements of doors, windows, rooms and any other items are approximated and no responsibility is taken for any error, omission or mis-statement. This plan is for illustrative purposes only and should be used as such by any prospective purchaser. The service, system and appliances shown have not been tested and no guarantee as to their operability or efficiency can be given.

© SpacePhoto

Photography and Floor Plan

Energy Performance Certificates

