



2 Principal Place, Worship Street, EC2A 2FE

Price:

£ 4,700 /pcm

2 Principal Place, Worship Street, EC2A 2FE

Price: £ 4,700 /pcm2 bedroom house

[View Property](#)

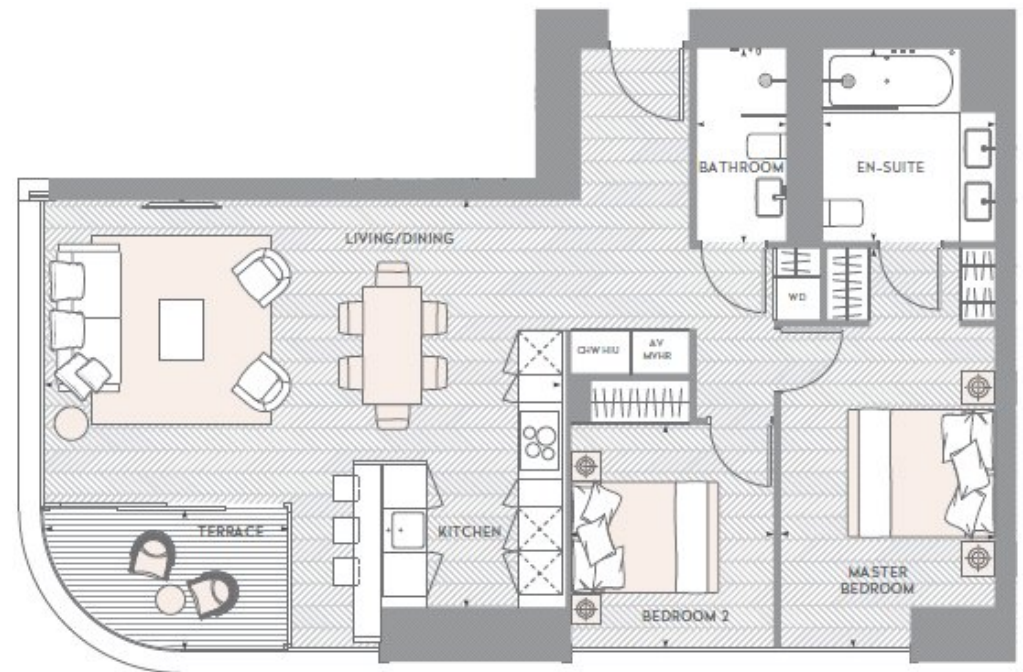
OVERVIEW

Luxury, south-west facing, furnished apartment spread over 882 Sq. Ft located on the an upper floor of Principal Tower with a private balcony, two double bedrooms, en-suite and family bathroom.

Perfectly located between Liverpool Street Station and Shoreditch Overground, Principal Tower offers unparalleled access to bars, restaurants, cafes and shops in the surrounding area.

KEY FEATURES

- Upper floor
- Two double bedrooms
- Balcony
- South-west facing
- Dual aspect
- Furnished
- Two bathrooms
- Residents' gym and pool
- 24 hour concierge



Energy Performance Certificates

Energy Efficiency Rating

	Current	Potential
Very energy efficient - lower running costs		
(92+) A		
(81-91) B	85	85
(69-80) C		
(55-68) D		
(39-54) E		
(21-38) F		
(1-20) G		

