



**12 Baltimore Wharf, E14 9FG**

Price:  
£ 650,000





# 12 Baltimore Wharf, E14 9FG

Price: £ 650,000 2 bedroom house

[View Property](#)

## OVERVIEW

Set within the sought-after Baltimore Wharf development, this beautifully presented fifth-floor two-bedroom, two-bathroom apartment offers stylish dockside living in the heart of Canary Wharf, E14. Spanning approximately 935 sq ft in total, the property combines generous internal proportions, two private balconies, and access to exceptional resident facilities, making it an outstanding choice for professionals, sharers, or investors seeking premium East London living.

The apartment features a bright and spacious open-plan living and dining area, enhanced by floor-to-ceiling glazing that floods the space with natural light. The well-designed layout flows seamlessly onto two private balconies, providing versatile outdoor spaces ideal for relaxing, entertaining, or enjoying the surrounding Docklands atmosphere. Both bedrooms are well-proportioned, with the principal bedroom benefiting from an en-suite bathroom, complemented by a sleek modern family bathroom finished to a high standard.

## KEY FEATURES

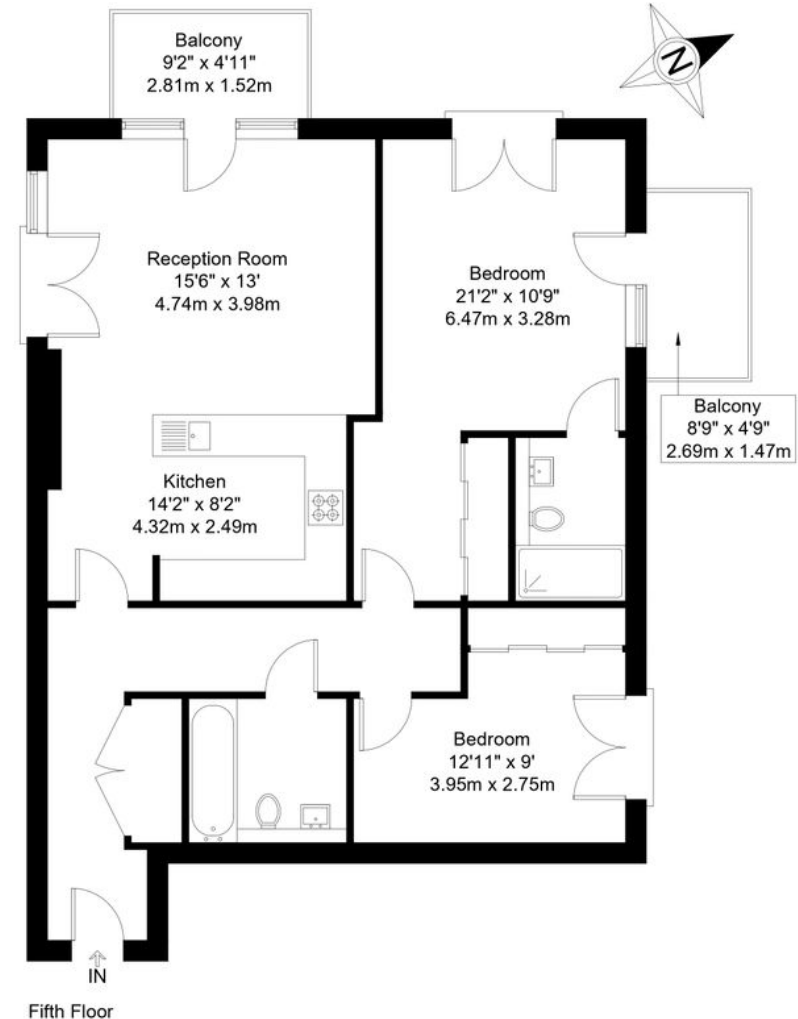
- Fifth floor two-bedroom apartment
- Approx. 935 sq ft internal space
- Two private balconies
- Two modern bathrooms
- Bright open-plan living area
- Club Baltimore resident facilities
- 25m indoor swimming pool
- Gym, boxing ring and classes
- 24-hour concierge service
- Strong Canary Wharf connectivity

# Baltimore Wharf, E14

Approx Gross Internal Area = 86.9 sq m / 935 sq ft

Balconies = 8.2 sq m / 88 sq ft

Total = 95.1 sq m / 1023 sq ft



The Floor plan is not to scale and measurements and areas shown are approximate and therefore should be used for illustrative purposes only. The plan has been prepared in accordance with the RICS code of Measuring Practice and whilst we have confidence in the information produced it must not be relied on. Maximum lengths and widths are represented on the floor plan. If there is any aspect of particular importance, you should carry out or commission your own inspection of the property.  
Copyright © BleuPlan

Energy Performance Certificates

