



**12 Baltimore Wharf, E14 9FG**

Price:  
£ 3,300 /pcm

# 12 Baltimore Wharf, E14 9FG

Price: £ 3,300 /pcm2 bedroom house

[View Property](#)

## OVERVIEW

Located within the prestigious Baltimore Wharf development, this beautifully presented furnished two-bedroom apartment offers contemporary dockside living in the heart of Canary Wharf. Combining generous living space, high-quality finishes and excellent resident facilities, this superb home is ideal for professionals seeking luxury accommodation in one of London's premier financial districts.

The apartment features a bright and spacious open-plan living and dining area, enhanced by floor-to-ceiling windows that flood the property with natural light. The adjoining private balcony provides an ideal space to relax while enjoying views across the surrounding Docklands skyline.

## KEY FEATURES

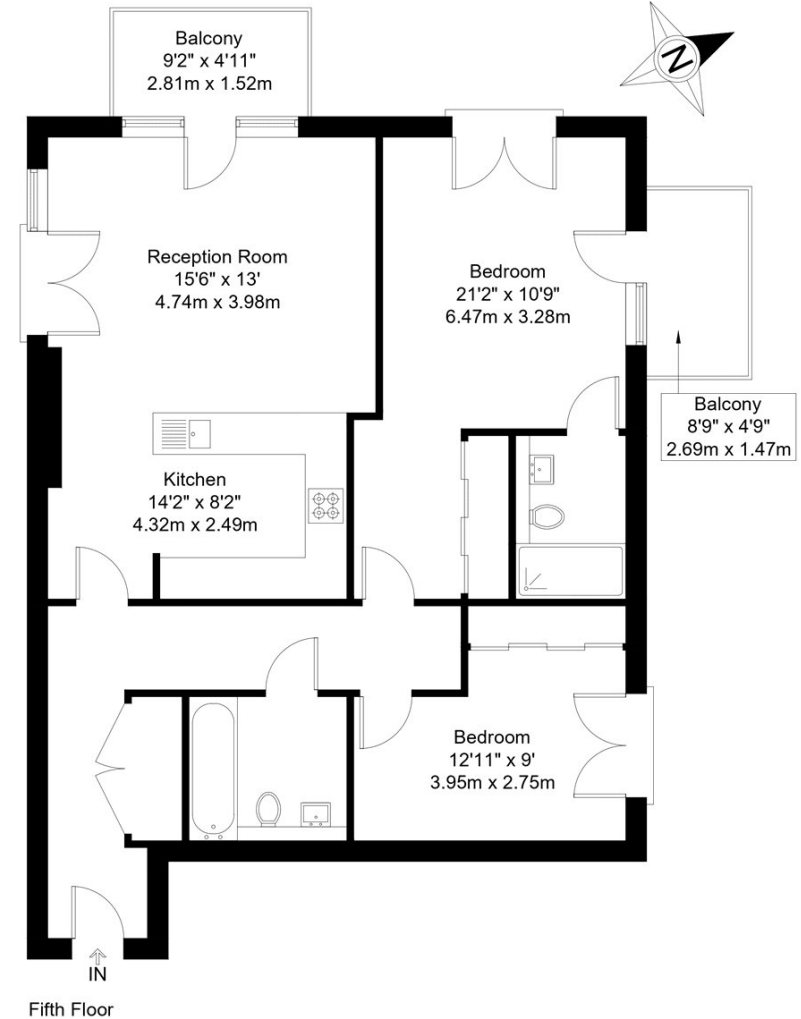
- Two double bedrooms
- Two bathrooms
- Fully furnished
- Direct river views
- Spacious open-plan living and dining area
- Modern integrated kitchen with premium appliances
- Two private balconies
- 24-hour concierge
- Residents' gymnasium and leisure facilities
- Secure development with lift access
- Moments from Crossharbour DLR and Canary Wharf

# Baltimore Wharf, E14

Approx Gross Internal Area = 86.9 sq m / 935 sq ft

Balconies = 8.2 sq m / 88 sq ft

Total = 95.1 sq m / 1023 sq ft



The Floor plan is not to scale and measurements and areas shown are approximate and therefore should be used for illustrative purposes only. The plan has been prepared in accordance with the RICS code of Measuring Practice and whilst we have confidence in the information produced it must not be relied on. Maximum lengths and widths are represented on the floor plan. If there is any aspect of particular importance, you should carry out or commission your own inspection of the property.

Copyright @ BleuPlan

