



1 Pan Peninsula Square, London, E14 9HL

Price:
£ 320,000

1 Pan Peninsula Square, London, E14 9HL

Price: £ 320,000

[View Property](#)

OVERVIEW

Situated on the 30th floor of the iconic Pan Peninsula development, this well-presented studio apartment offers far-reaching views across London and an excellent opportunity for both first-time buyers and investors alike.

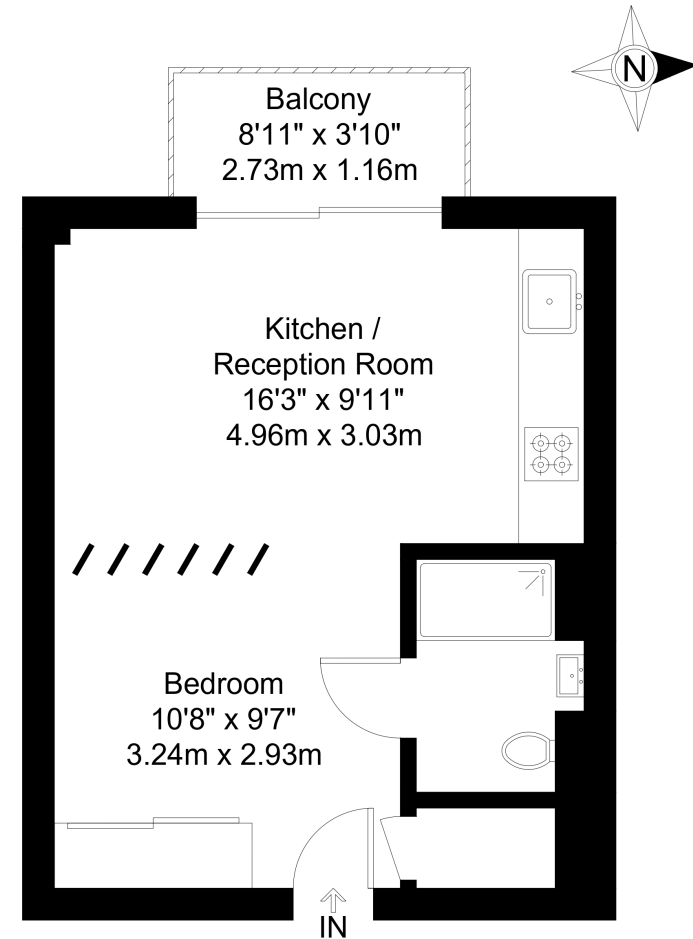
The apartment comprises a bright and spacious open-plan kitchen and reception area, thoughtfully laid out to maximise both living and sleeping space. Floor-to-ceiling windows allow for an abundance of natural light, enhancing the sense of space throughout. The modern kitchen is fully fitted with integrated appliances and sleek cabinetry, while the sleeping area is well defined, creating a practical and comfortable layout.

KEY FEATURES

- 30th floor studio apartment with far-reaching views
- Private balcony with elevated outlook
- Open-plan living and sleeping area
- Modern fully fitted kitchen with integrated appliances
- Contemporary bathroom finished to a high standard
- 24-hour concierge and luxury resident facilities
- Walking distance to Canary Wharf and South Quay DLR
- Chain free and ideal for first-time buyers or investors

Pan Peninsula Square, E14

Approx Gross Internal Area = 30.7 sq m / 330 sq ft
Balcony = 3.2 sq m / 34 sq ft
Total = 33.9 sq m / 364 sq ft



Thirtieth Floor

The Floor plan is not to scale and measurements and areas shown are approximate and therefore should be used for illustrative purposes only. The plan has been prepared in accordance with the RICS code of Measuring Practice and whilst we have confidence in the information produced it must not be relied on. Maximum lengths and widths are represented on the floor plan. If there is any aspect of particular importance, you should carry out or commission your own inspection of the property.
Copyright © BleuPlan

