



**1 Pan Peninsula Square, Canary Wharf, E14 9HJ**

Price:  
£ 1,999 /pcm

# 1 Pan Peninsula Square, Canary Wharf, E14 9HJ

Price: £ 1,999 /pcm

[View Property](#)

## OVERVIEW

Situated in the iconic Pan Peninsula development, this stylish studio apartment offers luxury living in the heart of Canary Wharf. Located on a high floor, the apartment boasts floor-to-ceiling windows with striking views across London, along with a sleek open-plan layout, integrated kitchen, and a high-spec modern bathroom. A private balcony provides the perfect spot to unwind above the city.

Residents of Pan Peninsula enjoy world-class facilities, including a 24-hour concierge, state-of-the-art gym, swimming pool, spa, private cinema, and a residents' lounge with business suites and a cocktail bar on the top floor. South Quay DLR is moments away, and Canary Wharf station (Elizabeth, Jubilee and DLR lines) is a short walk, offering fast connections to the City, West End and beyond.

## KEY FEATURES

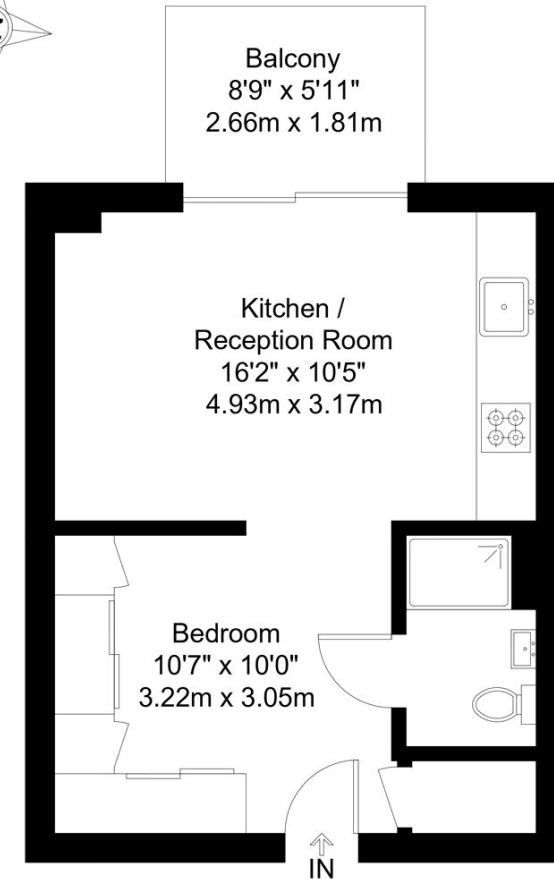
- High-floor studio with skyline views
- Private balcony with space to relax
- Open-plan layout with fitted wardrobes
- Fully integrated kitchen with modern appliances
- Luxury tiled bathroom
- 24-hour concierge
- Residents' gym, pool and spa
- Private cinema and business lounge
- Short walk to South Quay and Canary Wharf stations
- Surrounded by shops, dining and riverside walks

# Pan Peninsula Square, E14

Approx Gross Internal Area = 31 sq m / 334 sq ft

Balcony = 4.8 sq m / 52 sq ft

Total = 35.8 sq m / 385 sq ft



Twenty Eighth Floor

The Floor plan is not to scale and measurements and areas shown are approximate and therefore should be used for illustrative purposes only. The plan has been prepared in accordance with the RICS code of Measuring Practice and whilst we have confidence in the information produced it must not be relied on. Maximum lengths and widths are represented on the floor plan. If there is any aspect of particular importance, you should carry out or commission your own inspection of the property.  
Copyright @ BleuPlan

